

A46 Newark Bypass

TR010065/APP/2.6

2.6 Engineering Plans and Sections Part 2 – Plan and Profiles

APFP Regulation 5(2)(o), 5(2)(p) and 6(2)

Planning Act 2008

Infrastructure Planning (Applications: Prescribed Forms and
Procedure) Regulations 2009

Volume 2

April 2024

Infrastructure Planning

Planning Act 2008

**The Infrastructure Planning
(Applications: Prescribed Forms
and Procedure) Regulations 2009**

A46 Newark Bypass

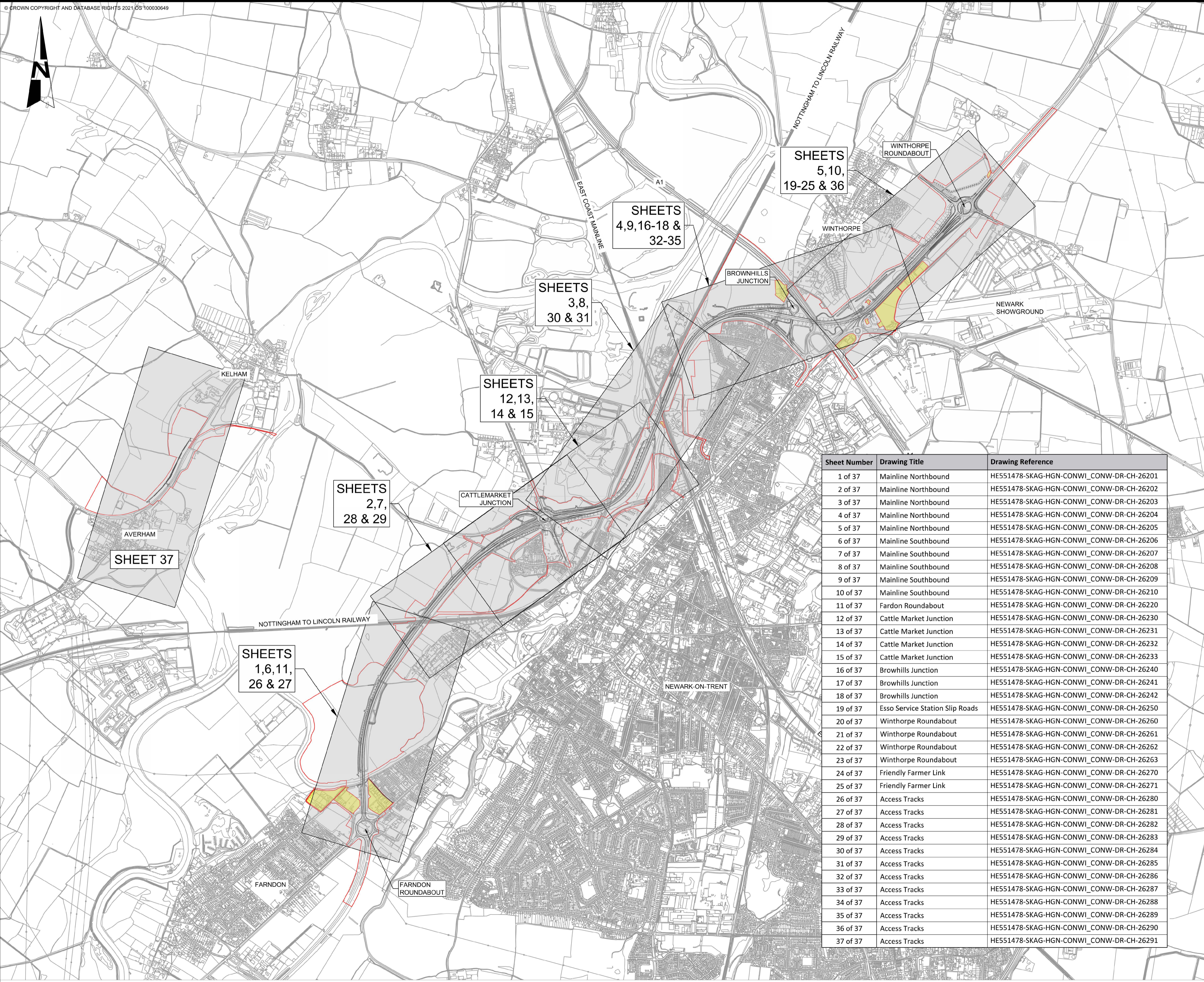
Development Consent Order 202[x]

Engineering Plans and Sections

Part 2 – Plan and Profiles

Regulation Number:	Regulation 5(2)(o), 5(2)(p) and 6(2)
Planning Inspectorate Scheme Reference	TR010065
Application Document Reference	TR010065/APP/2.6
Author:	A46 Newark Bypass Project Team, National Highways

Version	Date	Status of Version
Rev 1	April 2024	DCO Application



NOTES
 1. THE PURPOSE OF THIS DRAWING IS TO SUPPORT THE A46 NEWARK BYPASS DEVELOPMENT CONSENT ORDER (DCO) AND ACCOMPANYING APPLICATION DOCUMENTATION. (TR010065/APP/3.1)

KEY:
 — ORDER LIMITS
 — DESIGN LAYOUT
 ■ LAND NOT INCLUDED IN ORDER LIMITS

Sheet Number	Drawing Title	Drawing Reference
1 of 37	Mainline Northbound	HE551478-SKAG-HGN-CONWL_CONW-DR-CH-26201
2 of 37	Mainline Northbound	HE551478-SKAG-HGN-CONWL_CONW-DR-CH-26202
3 of 37	Mainline Northbound	HE551478-SKAG-HGN-CONWL_CONW-DR-CH-26203
4 of 37	Mainline Northbound	HE551478-SKAG-HGN-CONWL_CONW-DR-CH-26204
5 of 37	Mainline Northbound	HE551478-SKAG-HGN-CONWL_CONW-DR-CH-26205
6 of 37	Mainline Southbound	HE551478-SKAG-HGN-CONWL_CONW-DR-CH-26206
7 of 37	Mainline Southbound	HE551478-SKAG-HGN-CONWL_CONW-DR-CH-26207
8 of 37	Mainline Southbound	HE551478-SKAG-HGN-CONWL_CONW-DR-CH-26208
9 of 37	Mainline Southbound	HE551478-SKAG-HGN-CONWL_CONW-DR-CH-26209
10 of 37	Mainline Southbound	HE551478-SKAG-HGN-CONWL_CONW-DR-CH-26210
11 of 37	Fardon Roundabout	HE551478-SKAG-HGN-CONWL_CONW-DR-CH-26220
12 of 37	Cattle Market Junction	HE551478-SKAG-HGN-CONWL_CONW-DR-CH-26230
13 of 37	Cattle Market Junction	HE551478-SKAG-HGN-CONWL_CONW-DR-CH-26231
14 of 37	Cattle Market Junction	HE551478-SKAG-HGN-CONWL_CONW-DR-CH-26232
15 of 37	Cattle Market Junction	HE551478-SKAG-HGN-CONWL_CONW-DR-CH-26233
16 of 37	Brownhills Junction	HE551478-SKAG-HGN-CONWL_CONW-DR-CH-26240
17 of 37	Brownhills Junction	HE551478-SKAG-HGN-CONWL_CONW-DR-CH-26241
18 of 37	Brownhills Junction	HE551478-SKAG-HGN-CONWL_CONW-DR-CH-26242
19 of 37	Esso Service Station Slip Roads	HE551478-SKAG-HGN-CONWL_CONW-DR-CH-26250
20 of 37	Winthorpe Roundabout	HE551478-SKAG-HGN-CONWL_CONW-DR-CH-26260
21 of 37	Winthorpe Roundabout	HE551478-SKAG-HGN-CONWL_CONW-DR-CH-26261
22 of 37	Winthorpe Roundabout	HE551478-SKAG-HGN-CONWL_CONW-DR-CH-26262
23 of 37	Winthorpe Roundabout	HE551478-SKAG-HGN-CONWL_CONW-DR-CH-26263
24 of 37	Friendly Farmer Link	HE551478-SKAG-HGN-CONWL_CONW-DR-CH-26270
25 of 37	Friendly Farmer Link	HE551478-SKAG-HGN-CONWL_CONW-DR-CH-26271
26 of 37	Access Tracks	HE551478-SKAG-HGN-CONWL_CONW-DR-CH-26280
27 of 37	Access Tracks	HE551478-SKAG-HGN-CONWL_CONW-DR-CH-26281
28 of 37	Access Tracks	HE551478-SKAG-HGN-CONWL_CONW-DR-CH-26282
29 of 37	Access Tracks	HE551478-SKAG-HGN-CONWL_CONW-DR-CH-26283
30 of 37	Access Tracks	HE551478-SKAG-HGN-CONWL_CONW-DR-CH-26284
31 of 37	Access Tracks	HE551478-SKAG-HGN-CONWL_CONW-DR-CH-26285
32 of 37	Access Tracks	HE551478-SKAG-HGN-CONWL_CONW-DR-CH-26286
33 of 37	Access Tracks	HE551478-SKAG-HGN-CONWL_CONW-DR-CH-26287
34 of 37	Access Tracks	HE551478-SKAG-HGN-CONWL_CONW-DR-CH-26288
35 of 37	Access Tracks	HE551478-SKAG-HGN-CONWL_CONW-DR-CH-26289
36 of 37	Access Tracks	HE551478-SKAG-HGN-CONWL_CONW-DR-CH-26290
37 of 37	Access Tracks	HE551478-SKAG-HGN-CONWL_CONW-DR-CH-26291

CO2	11/03/24	Revised for DCO Submission	JK	SC	HF
REV.	DATE	AMENDMENT DETAILS	ORIG	CHK'D	APP'D

CLIENT

PURPOSE OF ISSUE
 DCO APPLICATION

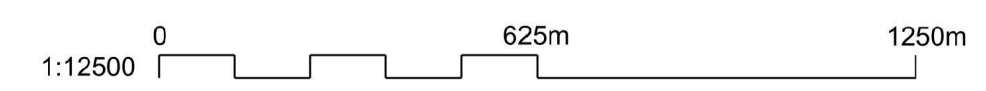
DEVELOPMENT CONSENT ORDER NUMBER
 TR010065

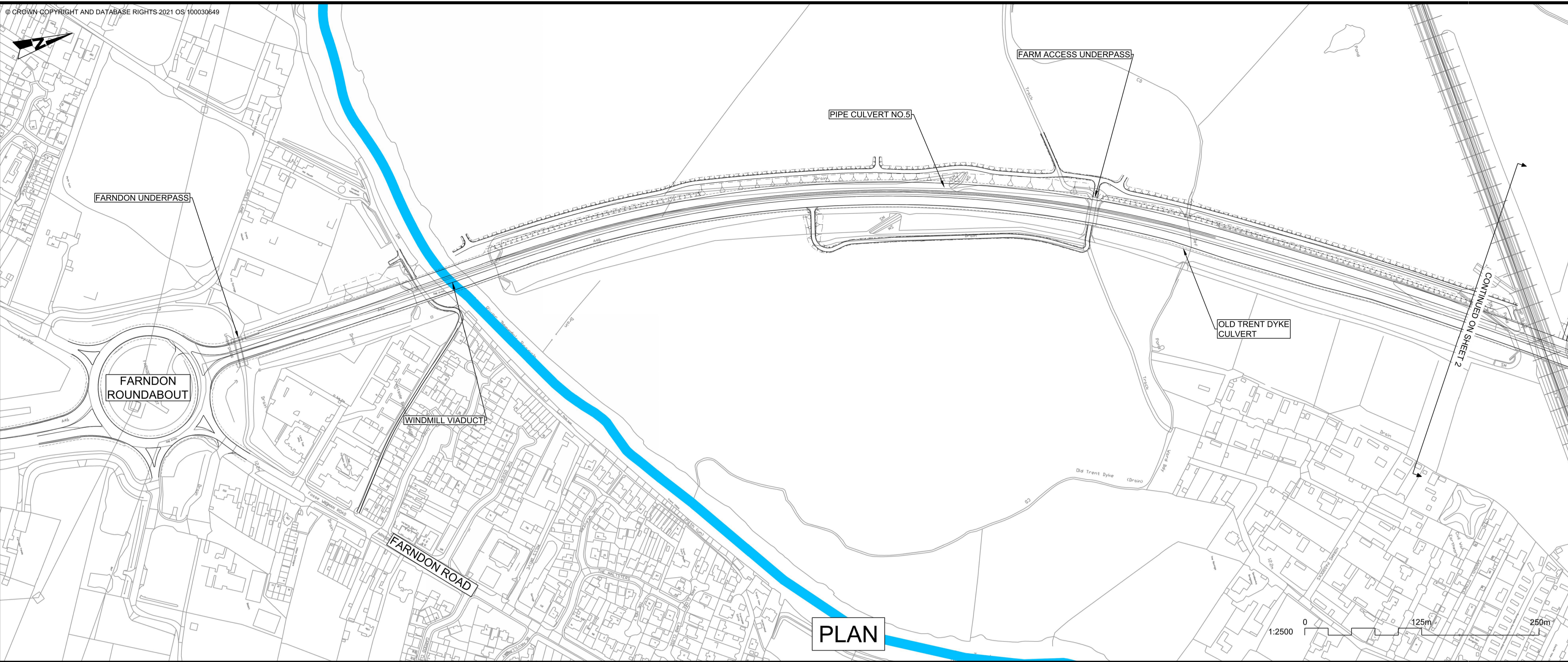
PROJECT TITLE
 A46 NEWARK BYPASS

DRAWING TITLE
 ENGINEERING PLANS AND SECTIONS
 REGULATION 5(2)(o), 5(2)(P) and 6(2)
 PLAN AND PROFILES - KEY PLAN

ORIGINAL SIZE A1 SCALE 1:12500

DRAWING NUMBER HE551478	ORIGINATOR SKAG	VOLUME HGN	PROJECT REF NO. HE551478
CONWL_CONW	DR	CH	REVISION
LOCATION	TYPE	ROLE	NUMBER
			C02





PLAN

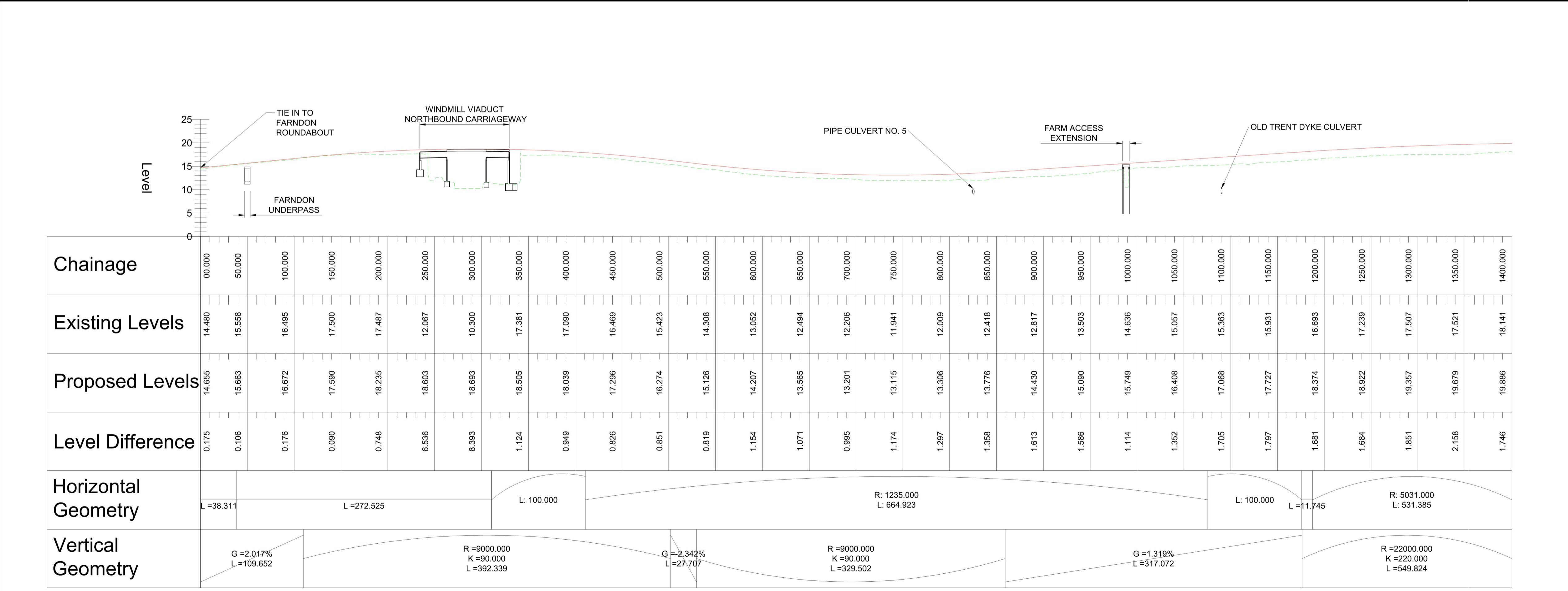
- NOTES**
1. THE DESIGN SHOWN WILL BE SUBJECT TO DETAILED DESIGN DEVELOPMENT IN ACCORDANCE WITH THE PROVISIONS OF THE DEVELOPMENT CONSENT ORDER (TR010065/APP/3.1).
 2. THIS DRAWING SHOULD BE READ IN CONJUNCTION WITH THE WORK PLANS (TR010065/APP/2.3) AND SCHEDULE 1 (AUTHORISED DEVELOPMENT) OF THE DEVELOPMENT CONSENT ORDER (TR010065/APP/3.1).
 3. DO NOT SCALE FROM THIS DRAWING, USE ONLY PRINTED DIMENSIONS.
 4. ALL DIMENSIONS, CHAINAGES, LEVELS AND COORDINATES ARE IN METRES UNLESS DEFINED OTHERWISE.

PLAN VIEW KEY:

- EXISTING STRUCTURE
- NEW STRUCTURE
- NEW DESIGN
- NEW ALIGNMENT
- NEW DESIGN CHAINAGE
- NEW EMBANKMENT
- NEW CUTTING
- RIVER
- RAILWAY LINE

PROFILE VIEW KEY:

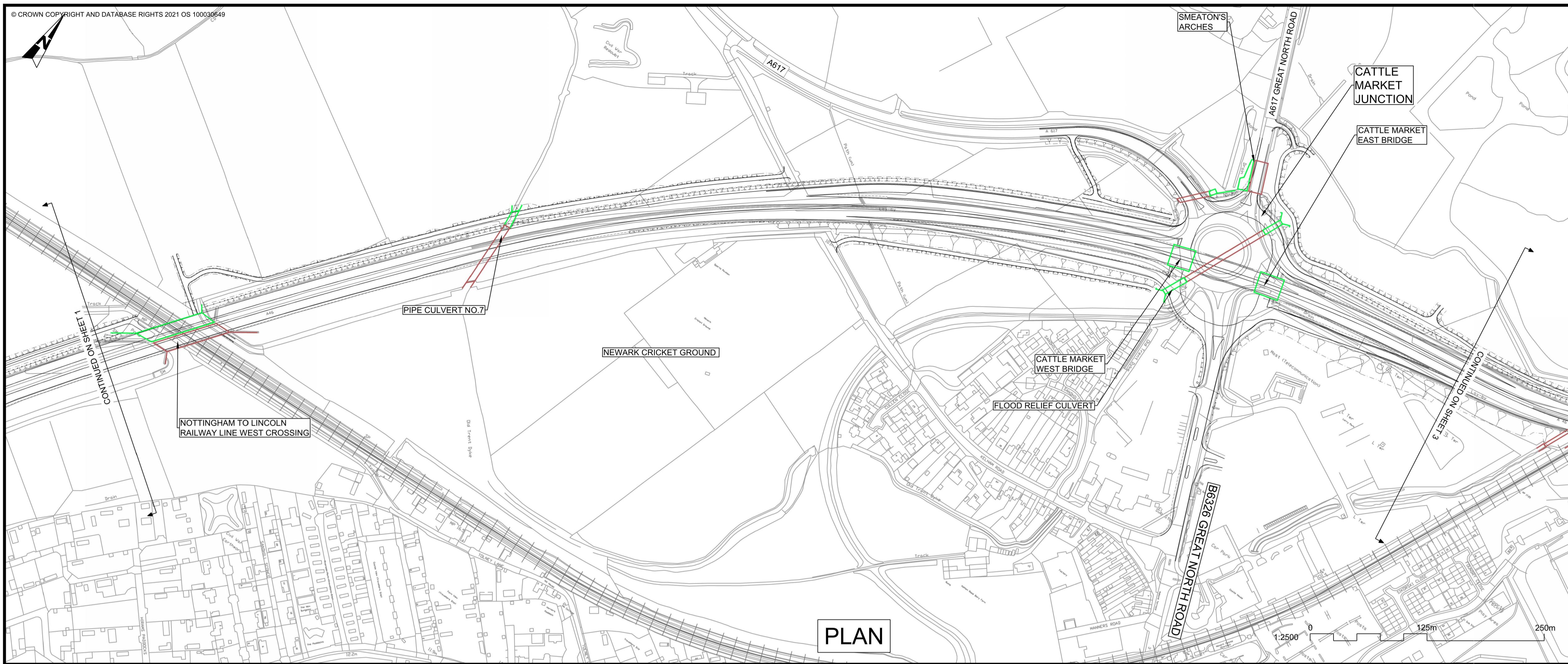
- EXISTING GROUND
- NEW ROAD LEVEL
- NEW STRUCTURE



PROFILE



C02	11/03/24	Revised for DCO Submission	JK	SC	HF
REV.	DATE	AMENDMENT DETAILS	ORIG	CHK'D	APP'D
CLIENT					
national highways					
PURPOSE OF ISSUE					
DCO APPLICATION					
DEVELOPMENT CONSENT ORDER NUMBER					
TR010065					
PROJECT TITLE					
A46 NEWARK BYPASS					
DRAWING TITLE					
ENGINEERING PLANS AND SECTIONS REGULATION 5(2)(o), 5(2)(P) and 6(2) PLAN AND PROFILES - SHEET 1 OF 37 MAINLINE NORTHBOUND					
ORIGINAL SIZE	A1	SCALE	1:2500		
DRAWING NUMBER	HE PIN	ORIGINATOR	VOLUME	PROJECT REF NO.	
HE551478	SKAG	HGN		HE551478	
CONWI_CONW	DR	CH	26201	REVISION	C02
LOCATION	TYPE	ROLE	NUMBER		



PLAN

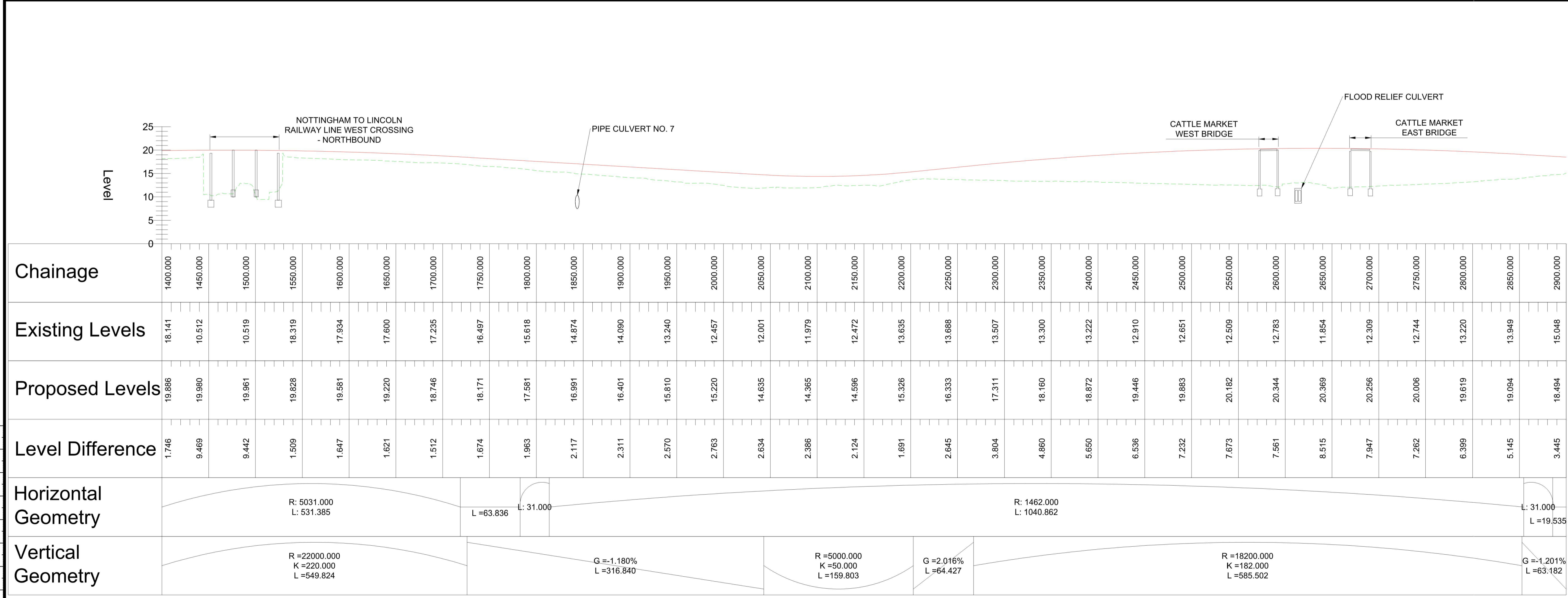
- NOTES**
1. THE DESIGN SHOWN WILL BE SUBJECT TO DETAILED DESIGN DEVELOPMENT IN ACCORDANCE WITH THE PROVISIONS OF THE DEVELOPMENT CONSENT ORDER (TR010065/APP/3.1).
 2. THIS DRAWING SHOULD BE READ IN CONJUNCTION WITH THE WORK PLANS (TR010065/APP/2.3) AND SCHEDULE 1 (AUTHORISED DEVELOPMENT) OF THE DEVELOPMENT CONSENT ORDER (TR010065/APP/3.1).
 3. DO NOT SCALE FROM THIS DRAWING. USE ONLY PRINTED DIMENSIONS.
 4. ALL DIMENSIONS, CHAINAGES, LEVELS AND COORDINATES ARE IN METRES UNLESS DEFINED OTHERWISE.

PLAN VIEW KEY:

- EXISTING STRUCTURE
- NEW STRUCTURE
- NEW DESIGN
- NEW ALIGNMENT
- XXXX NEW DESIGN CHAINAGE
- NEW EMBANKMENT
- NEW CUTTING
- RIVER
- RAILWAY LINE

PROFILE VIEW KEY:

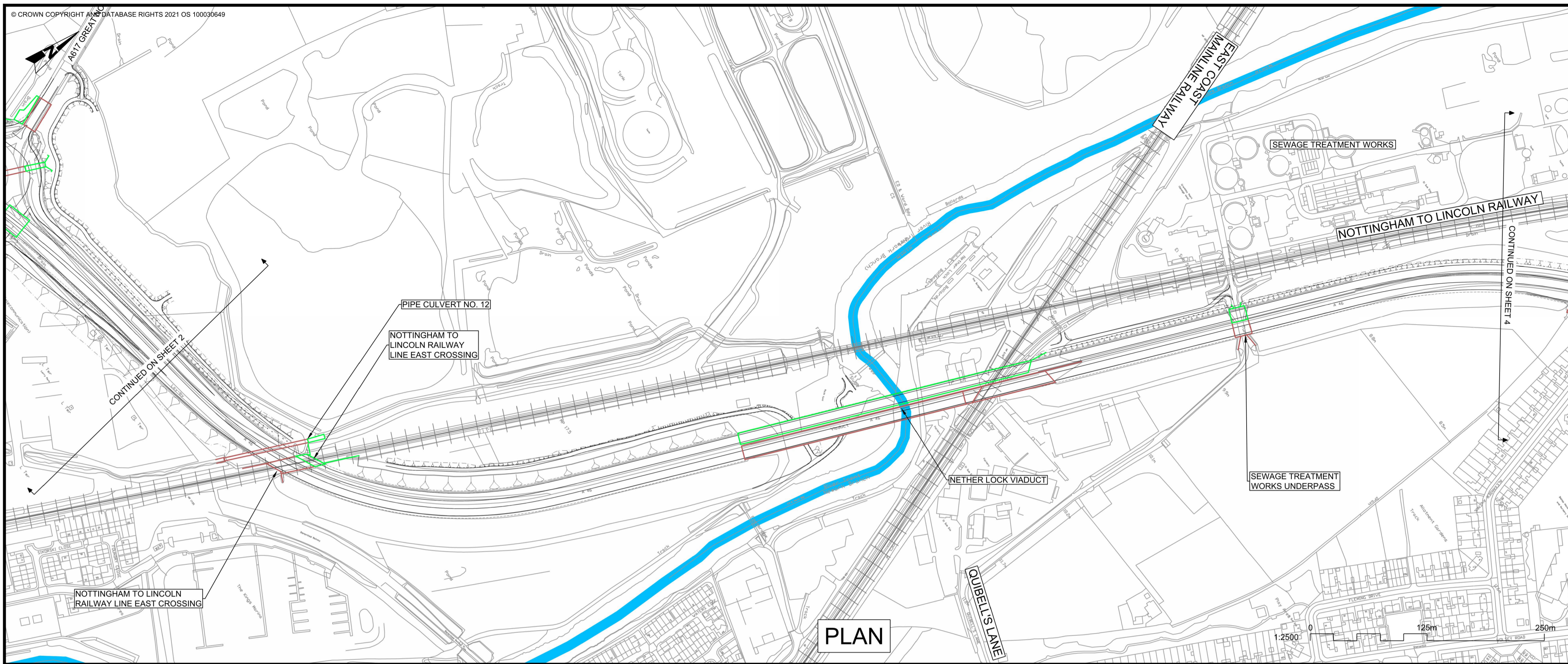
- EXISTING GROUND
- NEW ROAD LEVEL
- NEW STRUCTURE



PROFILE



REV.	DATE	AMENDMENT DETAILS	ORIG	CHK'D	APP'D
C02	11/03/24	Revised for DCO Submission	JK	SC	HF
CLIENT national highways					
PURPOSE OF ISSUE DCO APPLICATION					
DEVELOPMENT CONSENT ORDER NUMBER TR010065					
PROJECT TITLE A46 NEWARK BYPASS					
DRAWING TITLE ENGINEERING PLANS AND SECTIONS REGULATION 5(2)(o), 5(2)(P) and 6(2) PLAN AND PROFILES - SHEET 2 OF 37 MAINLINE NORTHBOUND					
ORIGINAL SIZE A1			SCALE 1:2500		
DRAWING NUMBER HE PIN HE551478		ORIGINATOR SKAG		VOLUME HGN	
CONWI_CONW		DR CH		26202	
LOCATION		I TYPE		I ROLE	
PROJECT REF NO. HE551478		REVISION C02			



PLAN

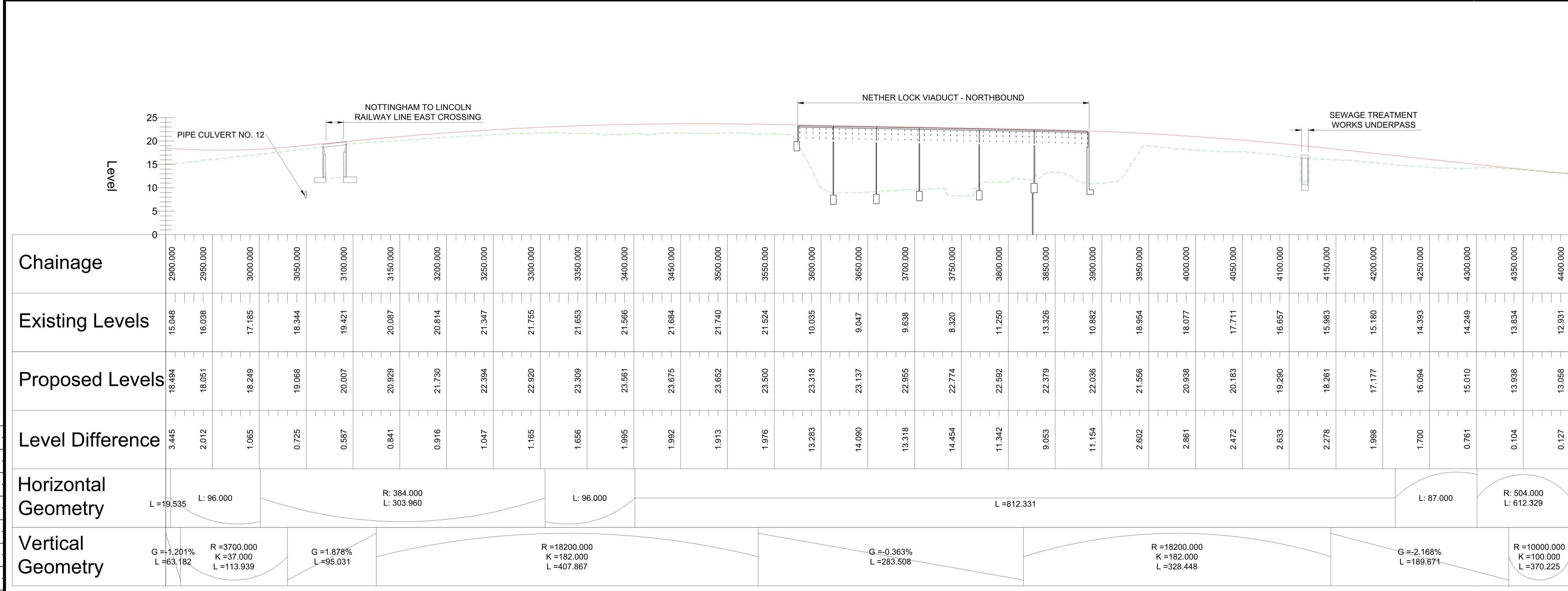
- NOTES**
1. THE DESIGN SHOWN WILL BE SUBJECT TO DETAILED DESIGN DEVELOPMENT IN ACCORDANCE WITH THE PROVISIONS OF THE DEVELOPMENT CONSENT ORDER (TR010065/APP/3.1).
 2. THIS DRAWING SHOULD BE READ IN CONJUNCTION WITH THE WORK PLANS (TR010065/APP/2.3) AND SCHEDULE 1 (AUTHORISED DEVELOPMENT) OF THE DEVELOPMENT CONSENT ORDER (TR010065/APP/3.1).
 3. DO NOT SCALE FROM THIS DRAWING, USE ONLY PRINTED DIMENSIONS.
 4. ALL DIMENSIONS, CHAINAGES, LEVELS AND COORDINATES ARE IN METRES UNLESS DEFINED OTHERWISE.

PLAN VIEW KEY:

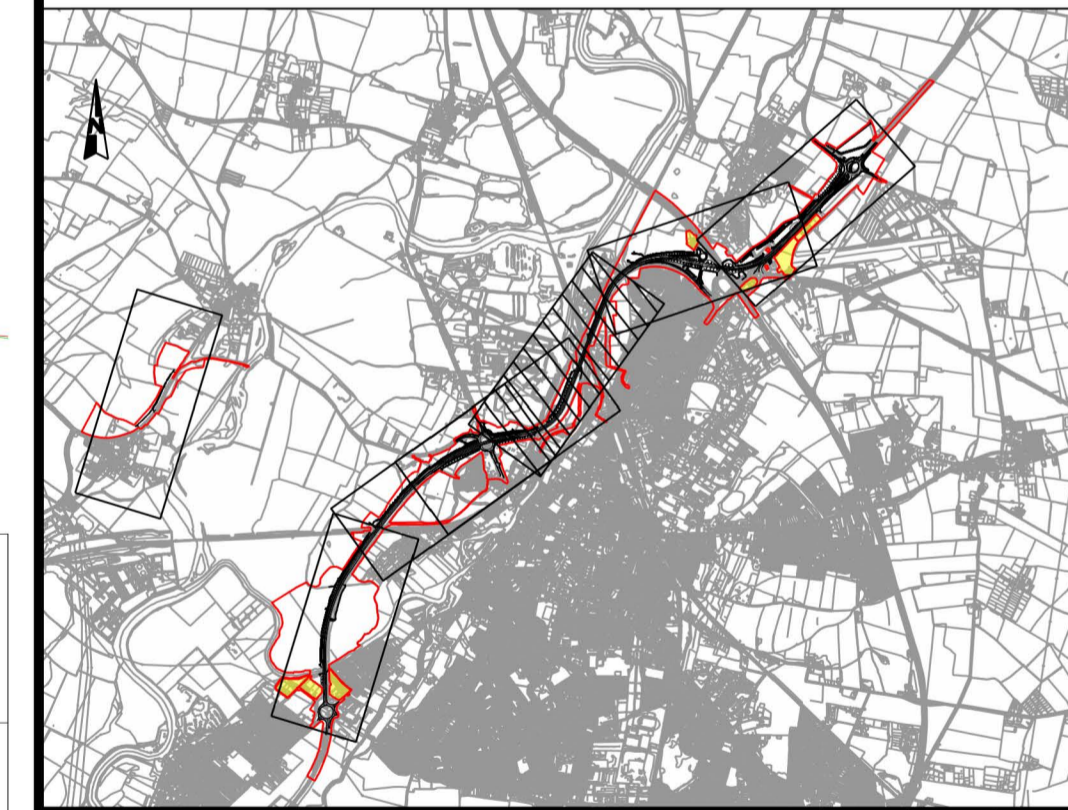
- EXISTING STRUCTURE
- NEW STRUCTURE
- NEW DESIGN
- NEW ALIGNMENT
- NEW DESIGN CHAINAGE
- NEW EMBANKMENT
- NEW CUTTING
- RIVER
- RAILWAY LINE

PROFILE VIEW KEY:

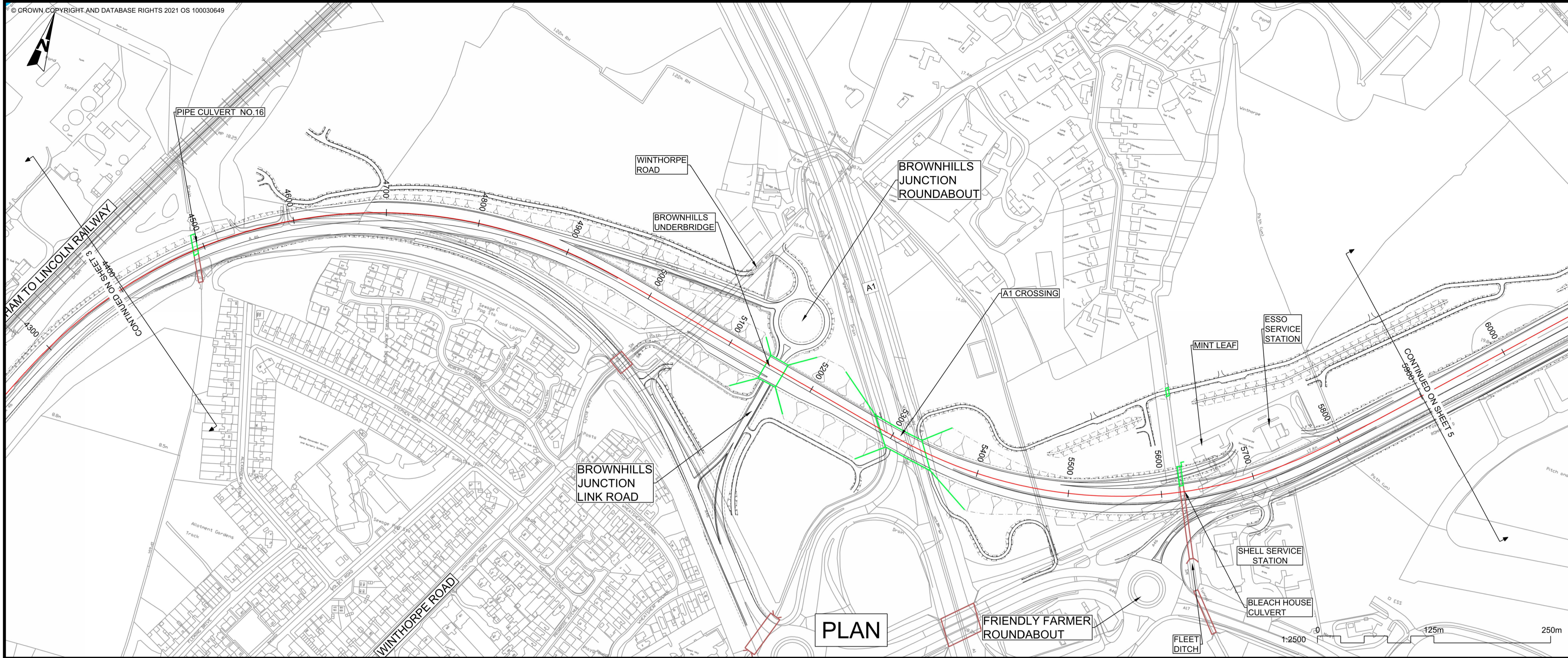
- EXISTING GROUND
- NEW ROAD LEVEL
- NEW STRUCTURE



PROFILE



REV.	DATE	AMENDMENT DETAILS	JK	SC	HF
C02	11/03/24	Revised for DCO Submission			
CLIENT					
national highways					
PURPOSE OF ISSUE					
DCO APPLICATION					
DEVELOPMENT CONSENT ORDER NUMBER					
TR010065					
PROJECT TITLE					
A46 NEWARK BYPASS					
DRAWING TITLE					
ENGINEERING PLANS AND SECTIONS REGULATION 5(2)(o), 5(2)(P) and 6(2) PLAN AND PROFILES - SHEET 3 OF 37 MAINLINE NORTHBOUND					
ORIGINAL SIZE			SCALE		
A1			1:2500		
DRAWING NUMBER		ORIGINATOR	VOLUME	PROJECT REF NO.	
HE551478		SKAG	HGN	HE551478	
CONWI_CONW		DR	CH	REVISION	
LOCATION		TYPE	ROLE	NUMBER	
				C02	



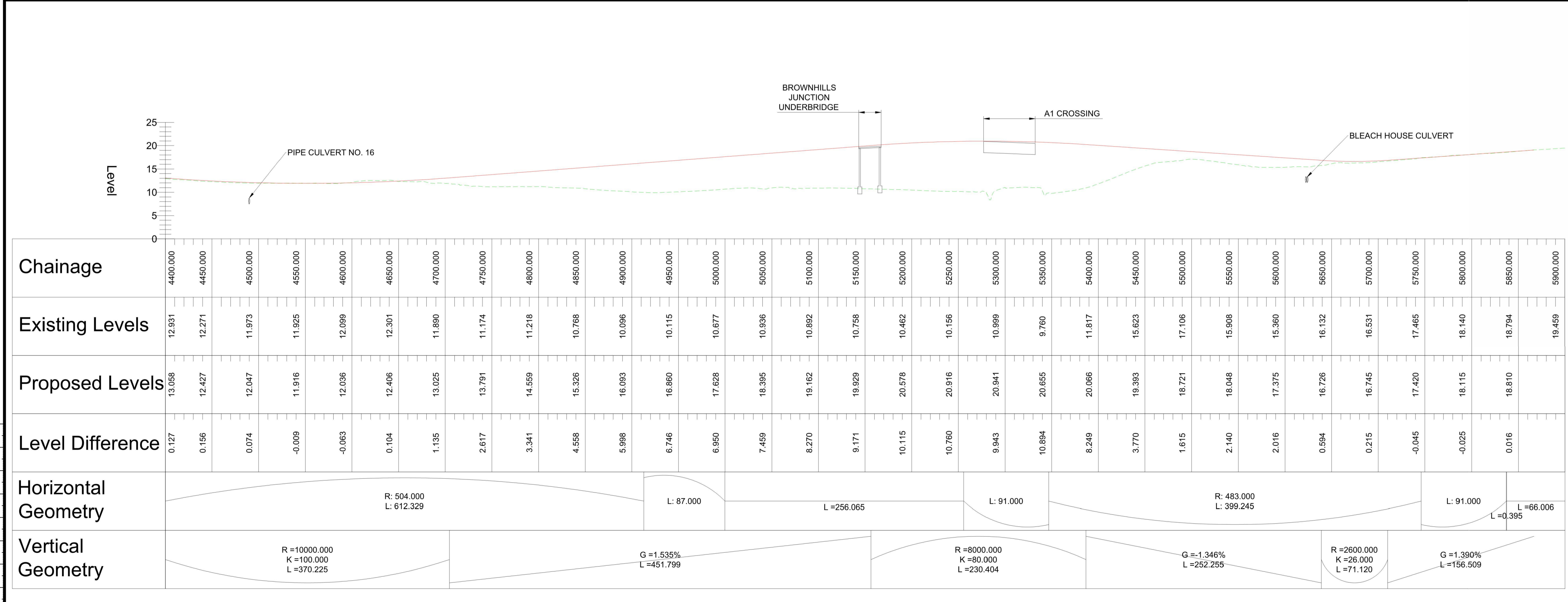
- NOTES**
1. THE DESIGN SHOWN WILL BE SUBJECT TO DETAILED DESIGN DEVELOPMENT IN ACCORDANCE WITH THE PROVISIONS OF THE DEVELOPMENT CONSENT ORDER (TR010065/APP/3.1).
 2. THIS DRAWING SHOULD BE READ IN CONJUNCTION WITH THE WORK PLANS (TR010065/APP/2.3) AND SCHEDULE 1 (AUTHORISED DEVELOPMENT) OF THE DEVELOPMENT CONSENT ORDER (TR010065/APP/3.1).
 3. DO NOT SCALE FROM THIS DRAWING, USE ONLY PRINTED DIMENSIONS.
 4. ALL DIMENSIONS, CHAINAGES, LEVELS AND COORDINATES ARE IN METRES UNLESS DEFINED OTHERWISE.

PLAN VIEW KEY:

- EXISTING STRUCTURE
- NEW STRUCTURE
- NEW DESIGN
- NEW ALIGNMENT
- NEW DESIGN CHAINAGE
- NEW EMBANKMENT
- NEW CUTTING
- RIVER
- RAILWAY LINE

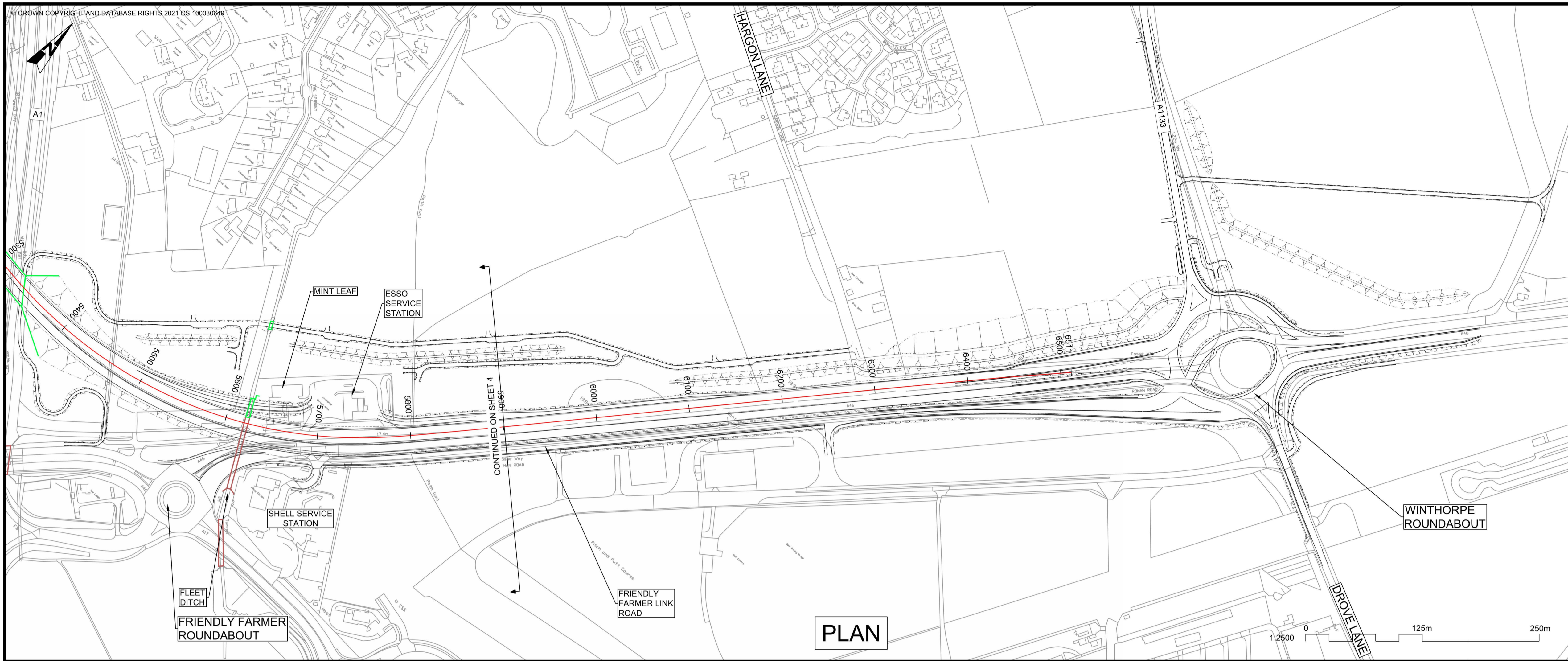
PROFILE VIEW KEY:

- EXISTING GROUND
- NEW ROAD LEVEL
- NEW STRUCTURE



REV.	DATE	AMENDMENT DETAILS	ORIG	CHK'D	APP'D
C02	11/03/24	Revised for DCO Submission	JK	SC	HF
CLIENT					
national highways					
PURPOSE OF ISSUE					
DCO APPLICATION					
DEVELOPMENT CONSENT ORDER NUMBER					
TR010065					
PROJECT TITLE					
A46 NEWARK BYPASS					
DRAWING TITLE					
ENGINEERING PLANS AND SECTIONS REGULATION 5(2)(c), 5(2)(P) and 6(2) PLAN AND PROFILES - SHEET 4 OF 37 MAINLINE NORTHBOUND					
ORIGINAL SIZE			SCALE		
A1			1:2500		
DRAWING NUMBER		ORIGINATOR	VOLUME	PROJECT REF NO.	
HE551478		SKAG	HGN	HE551478	
CONWI_CONW		DR	CH	26204	REVISION
					C02

PROFILE



- NOTES
1. THE DESIGN SHOWN WILL BE SUBJECT TO DETAILED DESIGN DEVELOPMENT IN ACCORDANCE WITH THE PROVISIONS OF THE DEVELOPMENT CONSENT ORDER (TR010065/APP/3.1).
 2. THIS DRAWING SHOULD BE READ IN CONJUNCTION WITH THE WORK PLANS (TR010065/APP/2.3) AND SCHEDULE 1 (AUTHORISED DEVELOPMENT) OF THE DEVELOPMENT CONSENT ORDER (TR010065/APP/3.1).
 3. DO NOT SCALE FROM THIS DRAWING, USE ONLY PRINTED DIMENSIONS.
 4. ALL DIMENSIONS, CHAINAGES, LEVELS AND COORDINATES ARE IN METRES UNLESS DEFINED OTHERWISE.

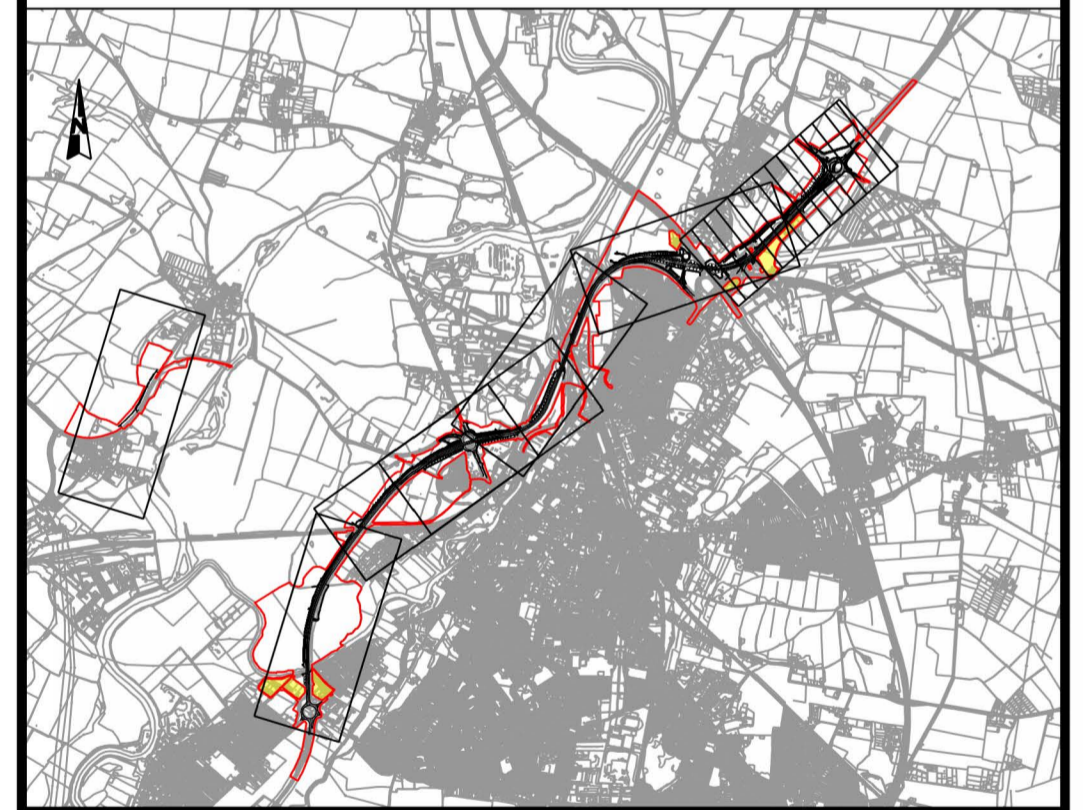
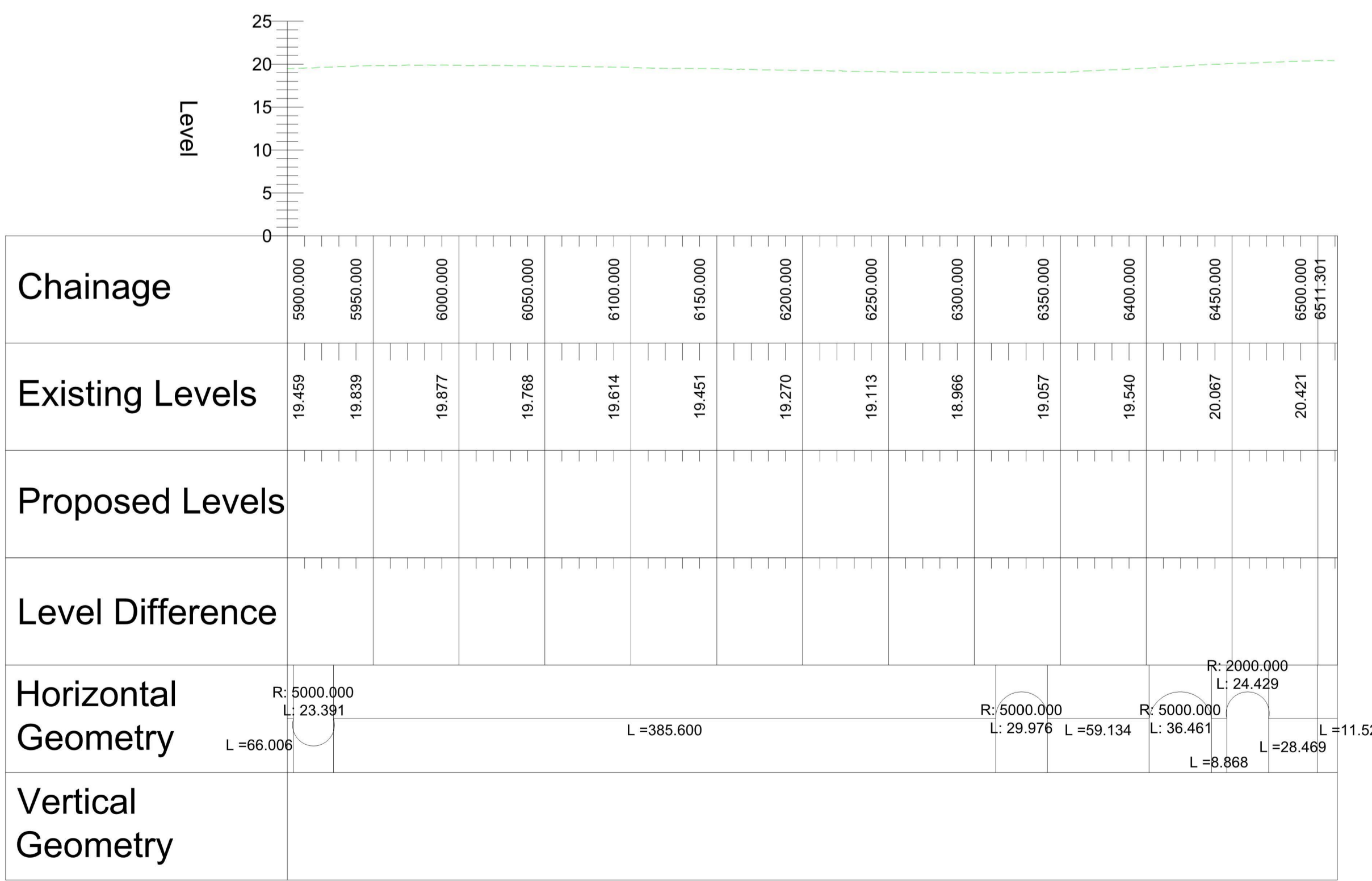
PLAN VIEW KEY:

- EXISTING STRUCTURE
- NEW STRUCTURE
- NEW DESIGN
- NEW ALIGNMENT
- XXXX NEW DESIGN CHAINAGE
- NEW EMBANKMENT
- NEW CUTTING
- RIVER
- RAILWAY LINE

PROFILE VIEW KEY:

- EXISTING GROUND
- NEW ROAD LEVEL
- NEW STRUCTURE

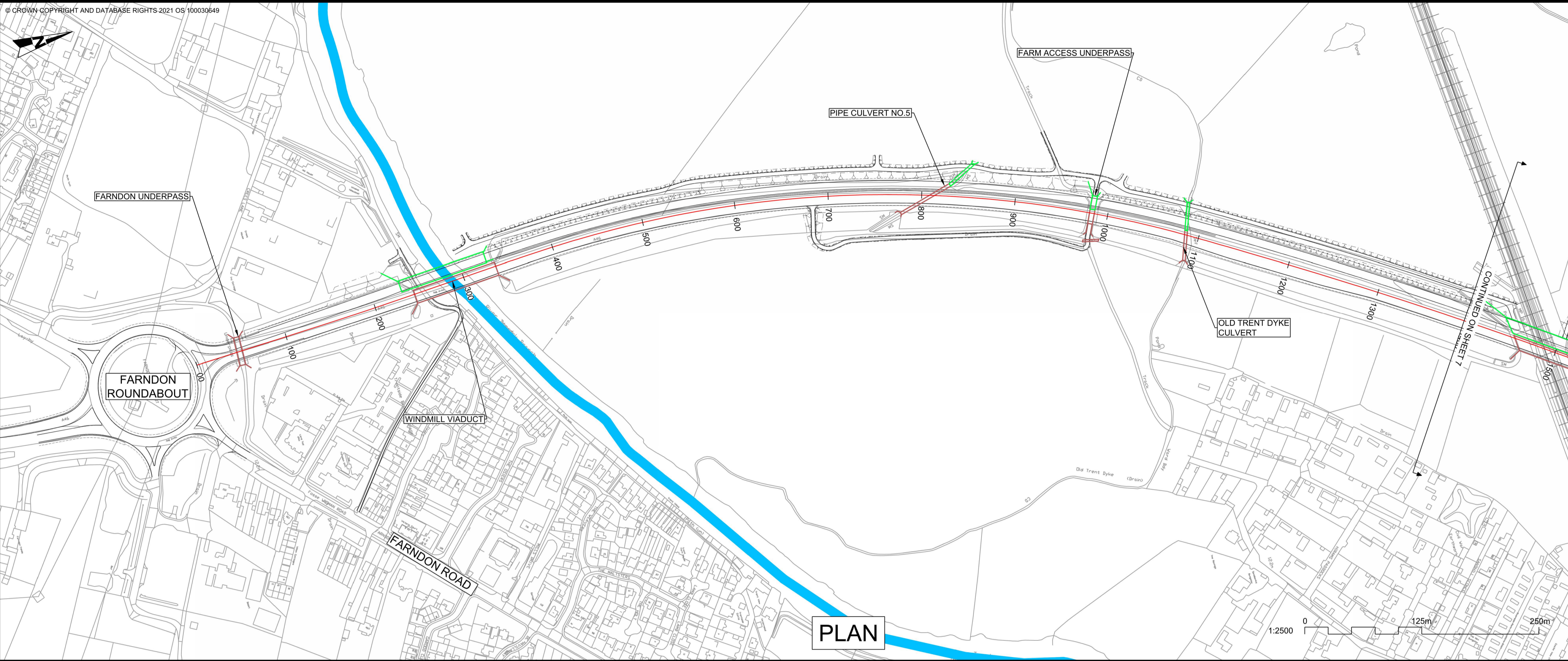
VERTICAL PROFILE AS PER EXISTING GROUND



REV.	DATE	AMENDMENT DETAILS	ORIG	CHK'D	APP'D
C02	11/03/24	Revised for DCO Submission	JK	SC	HF
CLIENT					
national highways					
PURPOSE OF ISSUE					
DCO APPLICATION					
DEVELOPMENT CONSENT ORDER NUMBER					
TR010065					
PROJECT TITLE					
A46 NEWARK BYPASS					
DRAWING TITLE					
ENGINEERING PLANS AND SECTIONS REGULATION 5(2)(o), 5(2)(P) and 6(2) PLAN AND PROFILES - SHEET 5 OF 37 MAINLINE NORTHBOUND					
ORIGINAL SIZE		SCALE			
A1		1:2500			
DRAWING NUMBER	ORIGINATOR	VOLUME	PROJECT REF NO.		
HE551478	SKAG	HGN	HE551478		
CONWI_CONW		DR	CH	26205	REVISION
LOCATION		TYPE	ROLE	NUMBER	C02

© Skanska
This document is issued for the party which commissioned it and for specific purposes connected with the captioned project only. It should not be relied upon by any other party or used for any other purpose. We accept no responsibility for the consequences of this document being relied upon by any other party, or being used for any other purpose, or containing any error or omission which is due to an error or omission in data supplied to us by other parties.

PROFILE



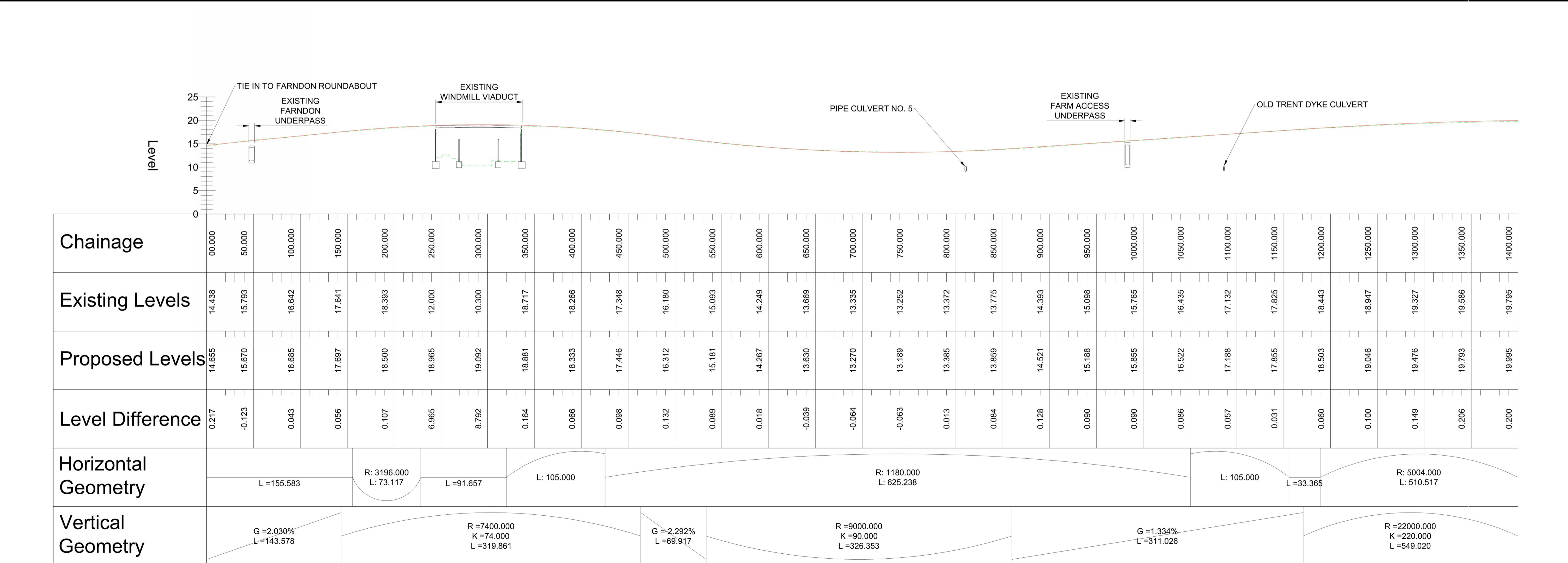
- NOTES**
1. THE DESIGN SHOWN WILL BE SUBJECT TO DETAILED DESIGN DEVELOPMENT IN ACCORDANCE WITH THE PROVISIONS OF THE DEVELOPMENT CONSENT ORDER (TR010065/APP/3.1).
 2. THIS DRAWING SHOULD BE READ IN CONJUNCTION WITH THE WORK PLANS (TR010065/APP/2.3) AND SCHEDULE 1 (AUTHORISED DEVELOPMENT) OF THE DEVELOPMENT CONSENT ORDER (TR010065/APP/3.1).
 3. DO NOT SCALE FROM THIS DRAWING, USE ONLY PRINTED DIMENSIONS.
 4. ALL DIMENSIONS, CHAINAGES, LEVELS AND COORDINATES ARE IN METRES UNLESS DEFINED OTHERWISE.

PLAN VIEW KEY:

- EXISTING STRUCTURE
- NEW STRUCTURE
- NEW DESIGN
- NEW ALIGNMENT
- XXXX NEW DESIGN CHAINAGE
- NEW EMBANKMENT
- NEW CUTTING
- RIVER
- RAILWAY LINE

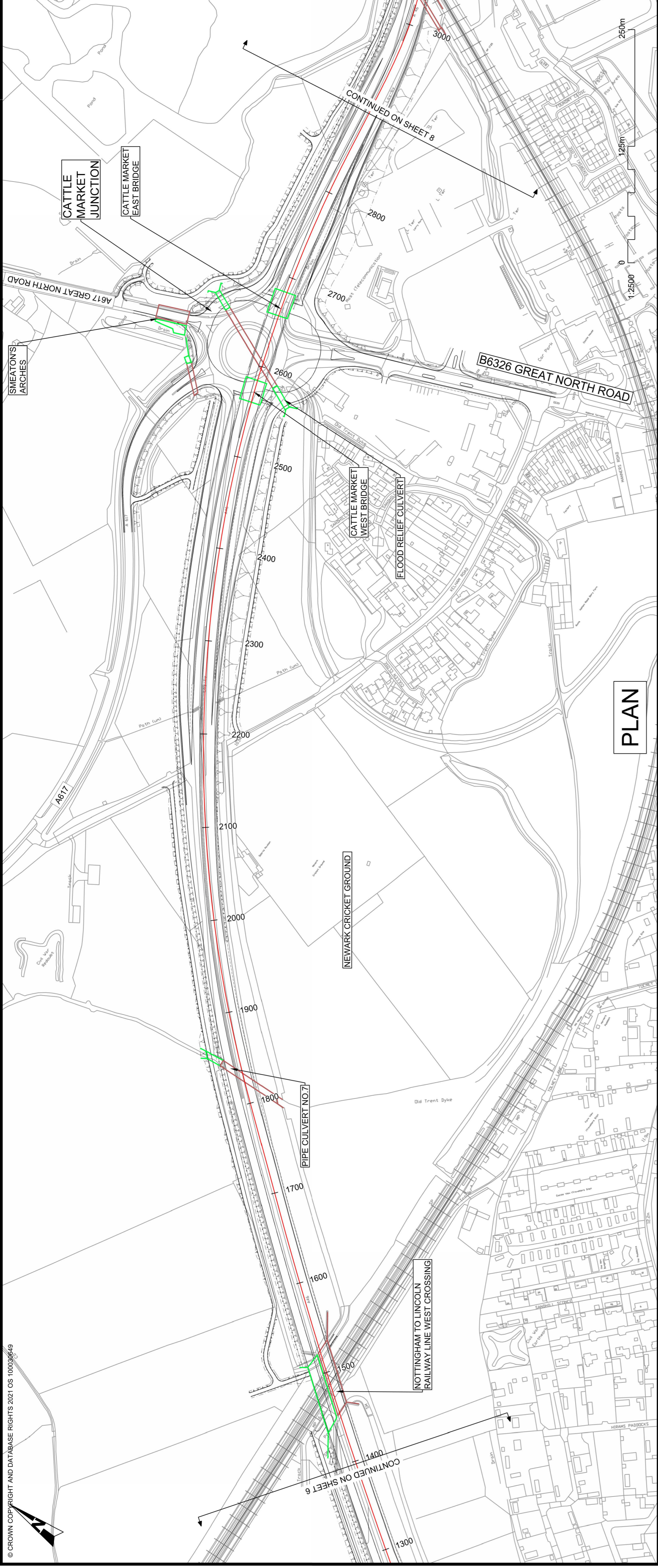
PROFILE VIEW KEY:

- EXISTING GROUND
- NEW ROAD LEVEL
- NEW STRUCTURE



C02	11/03/24	Revised for DCO Submission	JK	SC	HF
REV.	DATE	AMENDMENT DETAILS	ORIG	CHK'D	APP'D
CLIENT					
national highways					
PURPOSE OF ISSUE					
DCO APPLICATION					
DEVELOPMENT CONSENT ORDER NUMBER					
TR010065					
PROJECT TITLE					
A46 NEWARK BYPASS					
DRAWING TITLE					
ENGINEERING PLANS AND SECTIONS REGULATION 5(2)(o), 5(2)(P) and 6(2) PLAN AND PROFILES - SHEET 6 OF 37 MAINLINE SOUTHBOUND					
ORIGINAL SIZE	A1	SCALE	1:2500		
DRAWING NUMBER	HE PIN	ORIGINATOR	VOLUME	PROJECT REF NO.	
HE551478	SKAG	HGN		HE551478	
CONWI_CONW	DR	CH	26206	REVISION	
LOCATION	TYPE	ROLE	NUMBER	C02	

PROFILE



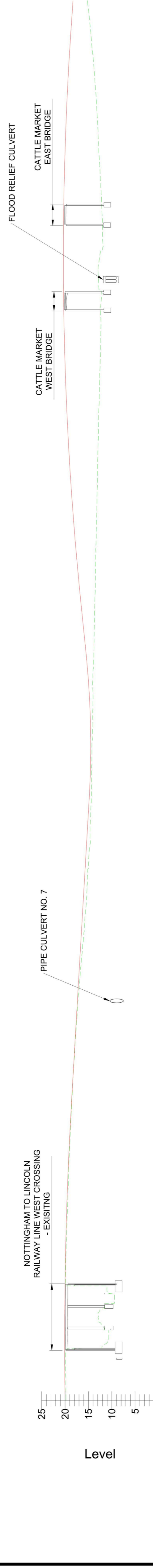
- NOTES**
1. THE DESIGN SHOWN WILL BE SUBJECT TO DETAILED DESIGN DEVELOPMENT IN ACCORDANCE WITH THE PROVISIONS OF THE DEVELOPMENT CONSENT ORDER (TR010065/APP3.1).
 2. THIS DRAWING SHOULD BE READ IN CONJUNCTION WITH THE WORK PLANS (TR010065/APP2.3) AND SCHEDULE 1 (AUTHORISED DEVELOPMENT) OF THE DEVELOPMENT CONSENT ORDER (TR010065/APP3.1).
 3. DO NOT SCALE FROM THIS DRAWING. USE ONLY PRINTED DIMENSIONS.
 4. ALL DIMENSIONS, CHANGES, LEVELS AND COORDINATES ARE IN METRES UNLESS DEFINED OTHERWISE.

PLAN VIEW KEY:

- EXISTING STRUCTURE
- NEW STRUCTURE
- NEW DESIGN
- NEW ALIGNMENT
- NEW DESIGN CHAINAGE
- NEW EMBANKMENT
- NEW CUTTING
- RIVER
- RAILWAY LINE

PROFILE VIEW KEY:

- EXISTING GROUND
- NEW ROAD LEVEL
- NEW STRUCTURE



Chainage	Existing Levels	Proposed Levels	Level Difference	Horizontal Geometry	Vertical Geometry
1400.000	19.795	20.084	0.207		
1450.000	19.877	20.084	0.207		
1500.000	11.583	20.060	8.476		
1550.000	19.843	19.921	0.079		
1600.000	19.508	19.669	0.161		
1650.000	19.189	19.304	0.115		
1700.000	18.758	18.825	0.067		
1750.000	18.257	18.253	-0.004		
1800.000	17.598	17.672	0.074		
1850.000	16.855	17.091	0.236		
1900.000	15.980	16.510	0.530		
1950.000	15.250	15.929	0.679		
2000.000	14.631	15.348	0.718		
2050.000	14.355	14.772	0.417		
2100.000	14.265	14.510	0.244		
2150.000	14.014	14.747	0.733		
2200.000	13.832	15.484	1.652		
2250.000	13.663	16.500	2.837		
2300.000	13.437	17.460	4.023		
2350.000	13.217	18.284	5.067		
2400.000	13.025	18.970	5.945		
2450.000	12.808	19.519	6.711		
2500.000	12.580	19.931	7.350		
2550.000	12.320	20.205	7.885		
2600.000	12.072	20.341	7.469		
2650.000	11.987	20.341	8.354		
2700.000	12.363	20.203	7.840		
2750.000	12.865	19.928	7.062		
2800.000	13.389	19.515	6.126		
2850.000	14.247	18.965	4.717		
2900.000	15.211	18.295	3.084		

Horizontal Geometry

R = 5004.000
L = 510.517

Vertical Geometry

G = -1.192%
L = 523.7423

G = 2.035%
L = 501.795

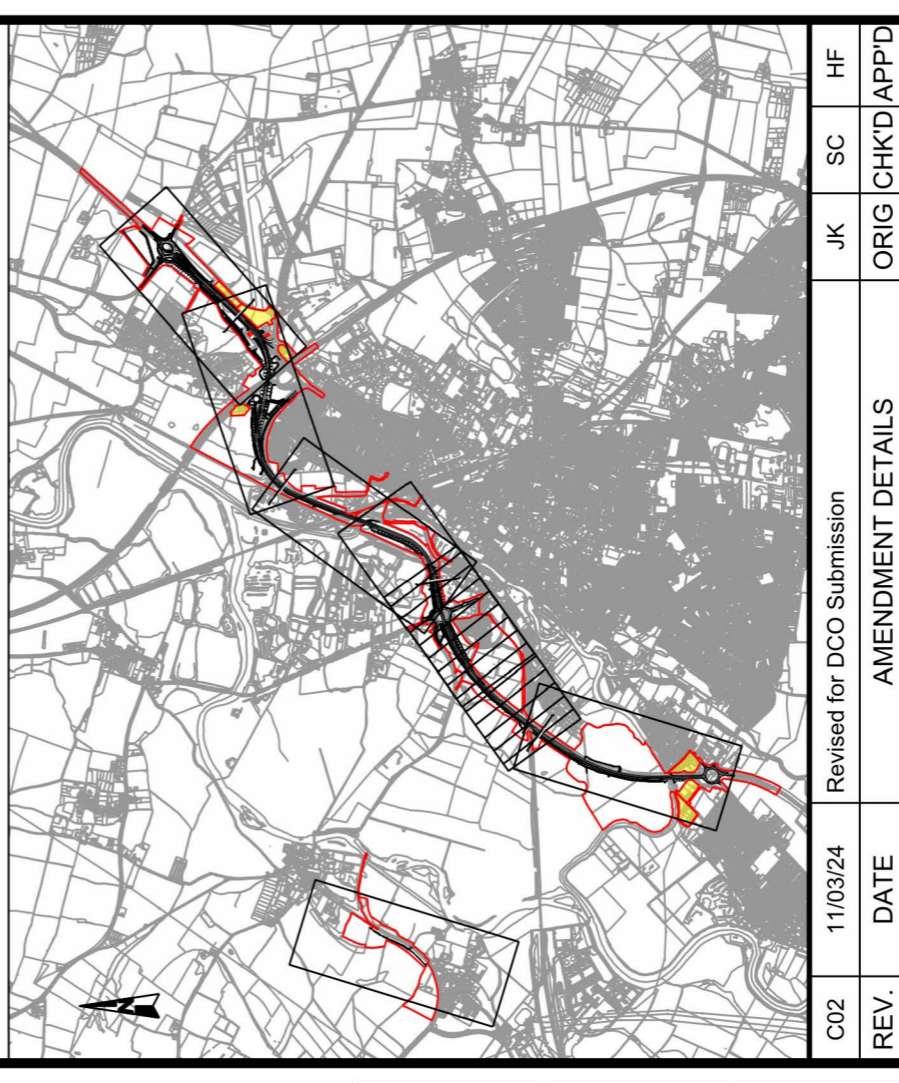
R = 5000.000
K = 50.000
L = 159.752

R = 18200.000
K = 182.000
L = 619.824

R = 1414.000
L = 1009.761

R = 18200.000
K = 182.000
L = 619.824

G = -1.372%
L = 38.563



national highways

CLIENT

REV.	DATE	AMENDMENT DETAILS	JK	SC	HF
C02	11/03/24	Revised for DCO Submission			

PURPOSE OF ISSUE: DCO APPLICATION

DEVELOPMENT CONSENT ORDER NUMBER: TR010065

PROJECT TITLE: A46 NEWARK BYPASS

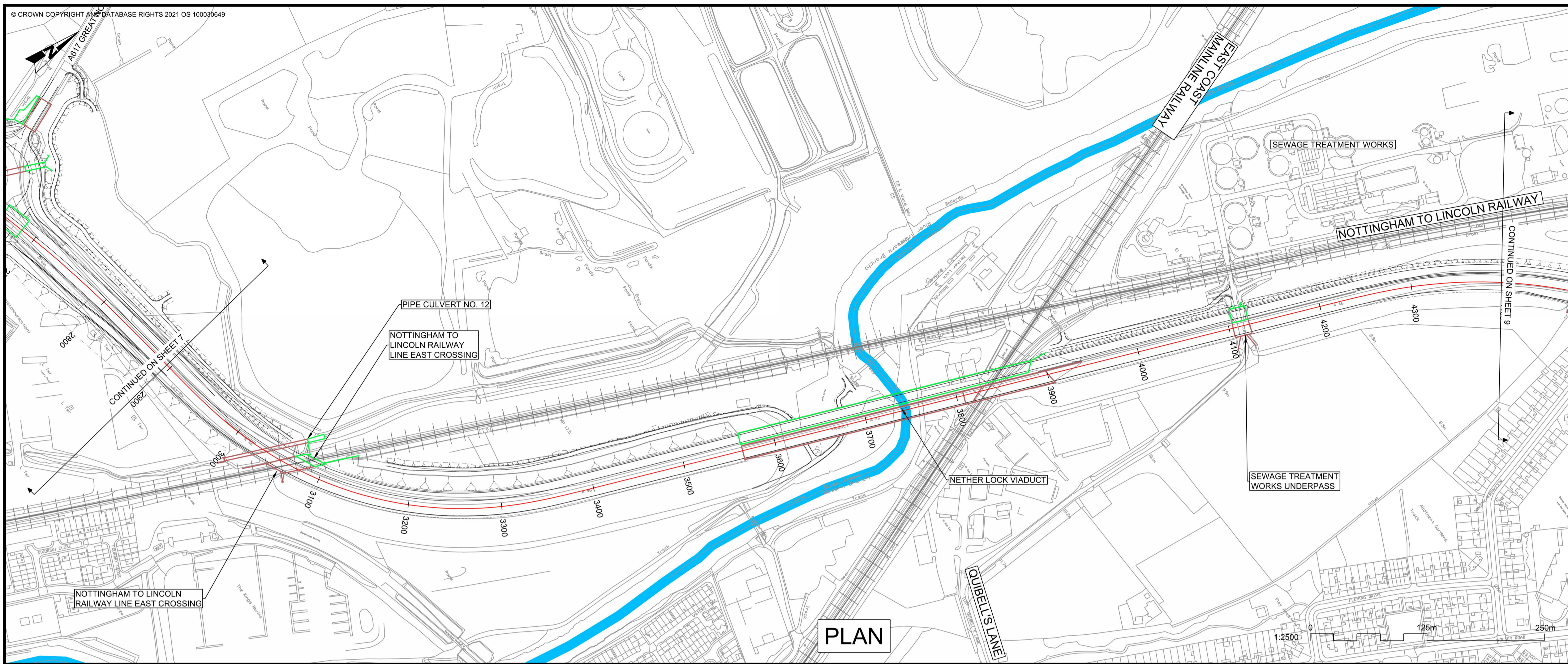
DRAWING TITLE: ENGINEERING PLANS AND SECTIONS REGULATION 5(2)(O), 5(2)(P) and 6(2) PLAN AND PROFILES - SHEET 7 OF 37 MAINLINE SOUTHBOUND

ORIGINAL SIZE: A1 SCALE: 1:2500

DRAWING NUMBER	ORIGINATOR	VOLUME	PROJECT REF NO.
HE551478	SKAG	HGN	HE551478
CONWL_CONW	DR	CH	REVISION
			C02

PROFILE

This document is issued for the party which commissioned it and for specific purposes connected with the captioned project only. It should not be relied upon by any other party or used for any other purpose. We accept no responsibility for the consequences of this document being relied upon by any other party, or being used for any other purpose, or containing any error or omission which is due to an error or omission in data supplied to us by other parties.



NOTES

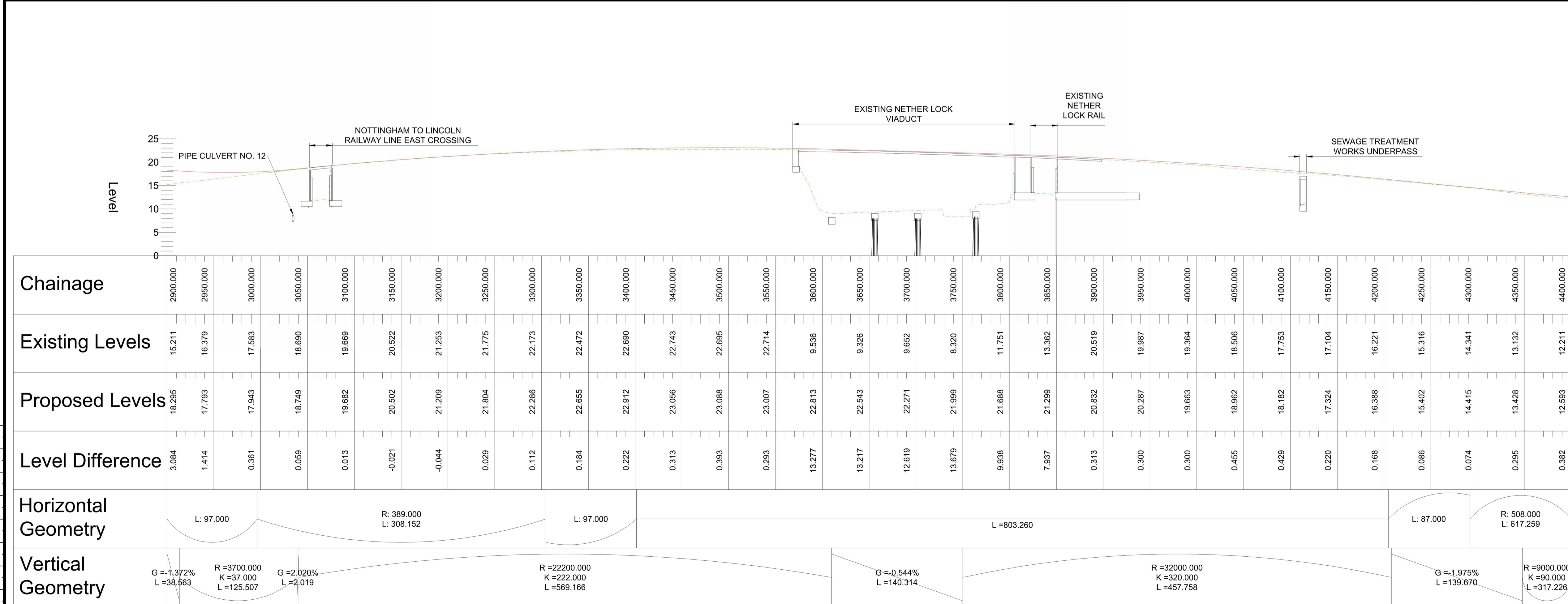
- THE DESIGN SHOWN WILL BE SUBJECT TO DETAILED DESIGN DEVELOPMENT IN ACCORDANCE WITH THE PROVISIONS OF THE DEVELOPMENT CONSENT ORDER (TR010065/APP/3.1).
- THIS DRAWING SHOULD BE READ IN CONJUNCTION WITH THE WORK PLANS (TR010065/APP/2.3) AND SCHEDULE 1 (AUTHORISED DEVELOPMENT) OF THE DEVELOPMENT CONSENT ORDER (TR010065/APP/3.1).
- DO NOT SCALE FROM THIS DRAWING. USE ONLY PRINTED DIMENSIONS.
- ALL DIMENSIONS, CHAINAGES, LEVELS AND COORDINATES ARE IN METRES UNLESS DEFINED OTHERWISE.

PLAN VIEW KEY:

- EXISTING STRUCTURE
- NEW STRUCTURE
- NEW DESIGN
- NEW ALIGNMENT
- NEW DESIGN CHAINAGE
- NEW EMBANKMENT
- NEW CUTTING
- RIVER
- RAILWAY LINE

PROFILE VIEW KEY:

- EXISTING GROUND
- NEW ROAD LEVEL
- NEW STRUCTURE



CLIENT
national highways

PURPOSE OF ISSUE
DCO APPLICATION

DEVELOPMENT CONSENT ORDER NUMBER
TR010065

PROJECT TITLE
A46 NEWARK BYPASS

DRAWING TITLE
ENGINEERING PLANS AND SECTIONS
REGULATION 5(2)(o), 5(2)(P) and 6(2)
PLAN AND PROFILES - SHEET 8 OF 37
MAINLINE SOUTHBOUND

ORIGINAL SIZE A1 **SCALE** 1:2500

DRAWING NUMBER HE PIN HE551478	ORIGINATOR SKAG	VOLUME HGN	PROJECT REF NO. HE551478
LOCATION CONWI_CONW	TYPE DR	ROLE CH	REVISION C02

NOTES

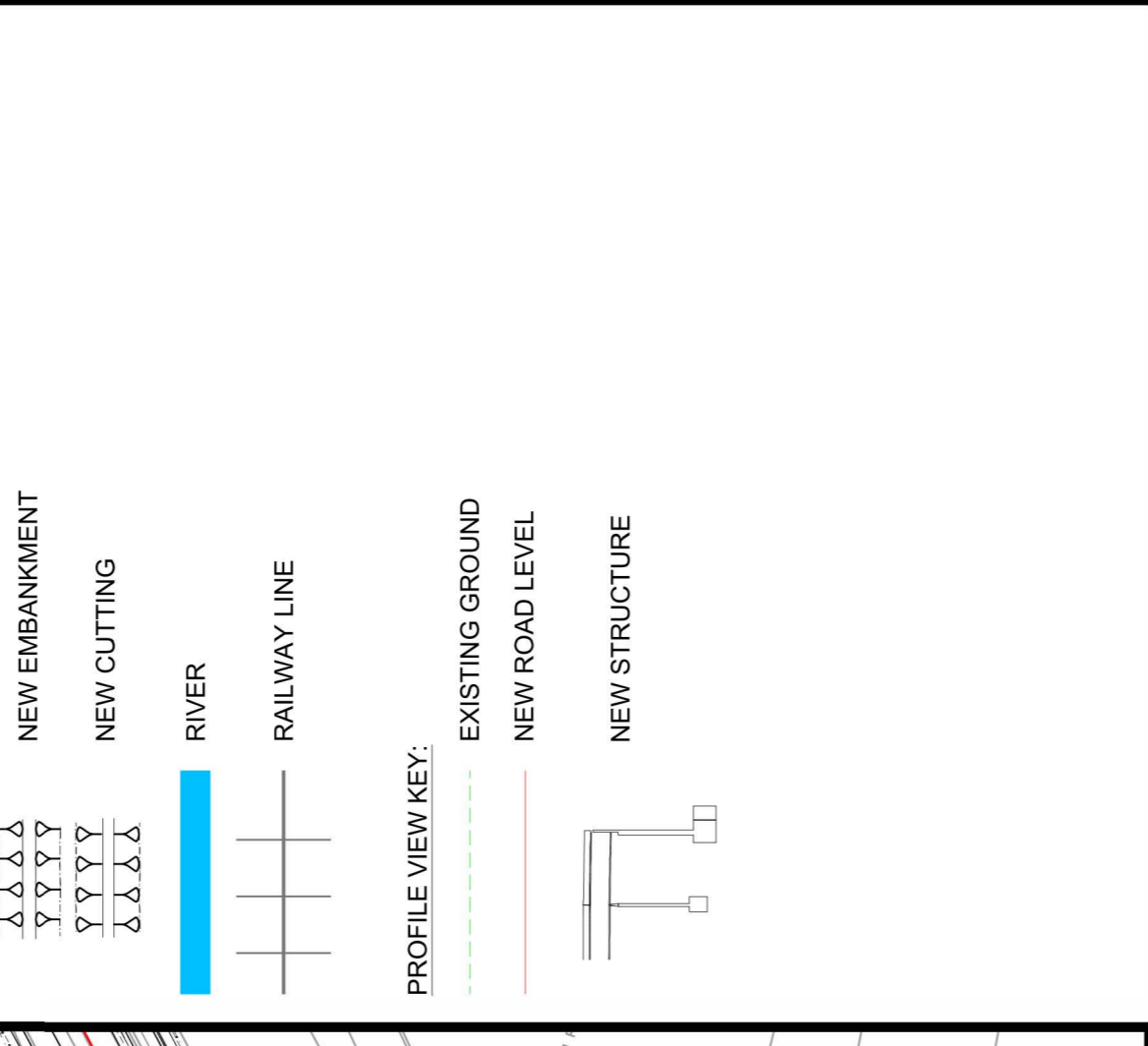
1. THE DESIGN SHOWN WILL BE SUBJECT TO DETAILED DESIGN DEVELOPMENT IN ACCORDANCE WITH THE PROVISIONS OF THE DEVELOPMENT CONSENT ORDER (TR010065/APP/3.1).
2. THIS DRAWING SHOULD BE READ IN CONJUNCTION WITH THE WORK PLANS (TR010065/APP/2.3) AND SCHEDULE 1 (AUTHORISED DEVELOPMENT) OF THE DEVELOPMENT CONSENT ORDER (TR010065/APP/3.1).
3. DO NOT SCALE FROM THIS DRAWING. USE ONLY PRINTED DIMENSIONS.
4. ALL DIMENSIONS, CHANGES, LEVELS AND COORDINATES ARE IN METRES UNLESS DEFINED OTHERWISE.

PLAN VIEW KEY:

- EXISTING STRUCTURE
- NEW STRUCTURE
- NEW DESIGN
- NEW ALIGNMENT
- NEW DESIGN CHAINAGE
- NEW EMBANKMENT
- NEW CUTTING
- RIVER
- RAILWAY LINE

PROFILE VIEW KEY:

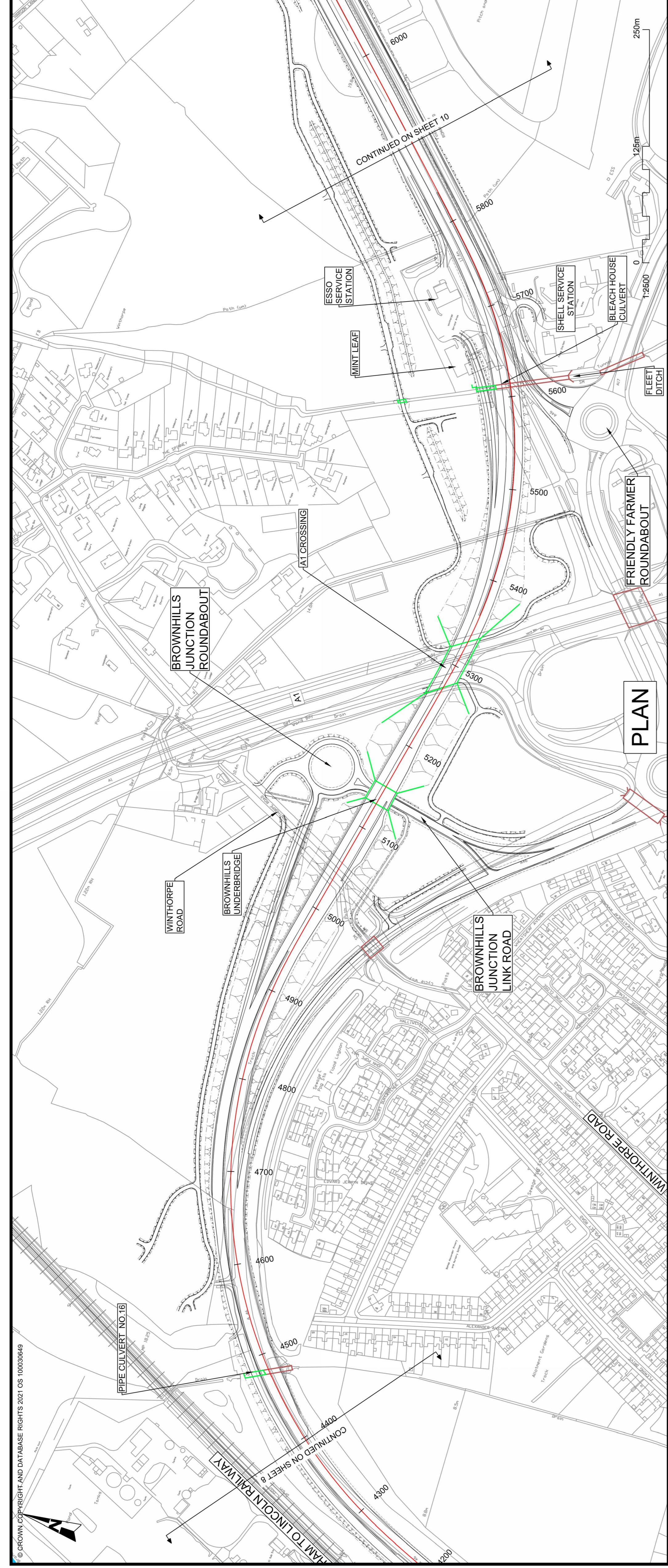
- EXISTING GROUND
- NEW ROAD LEVEL
- NEW STRUCTURE



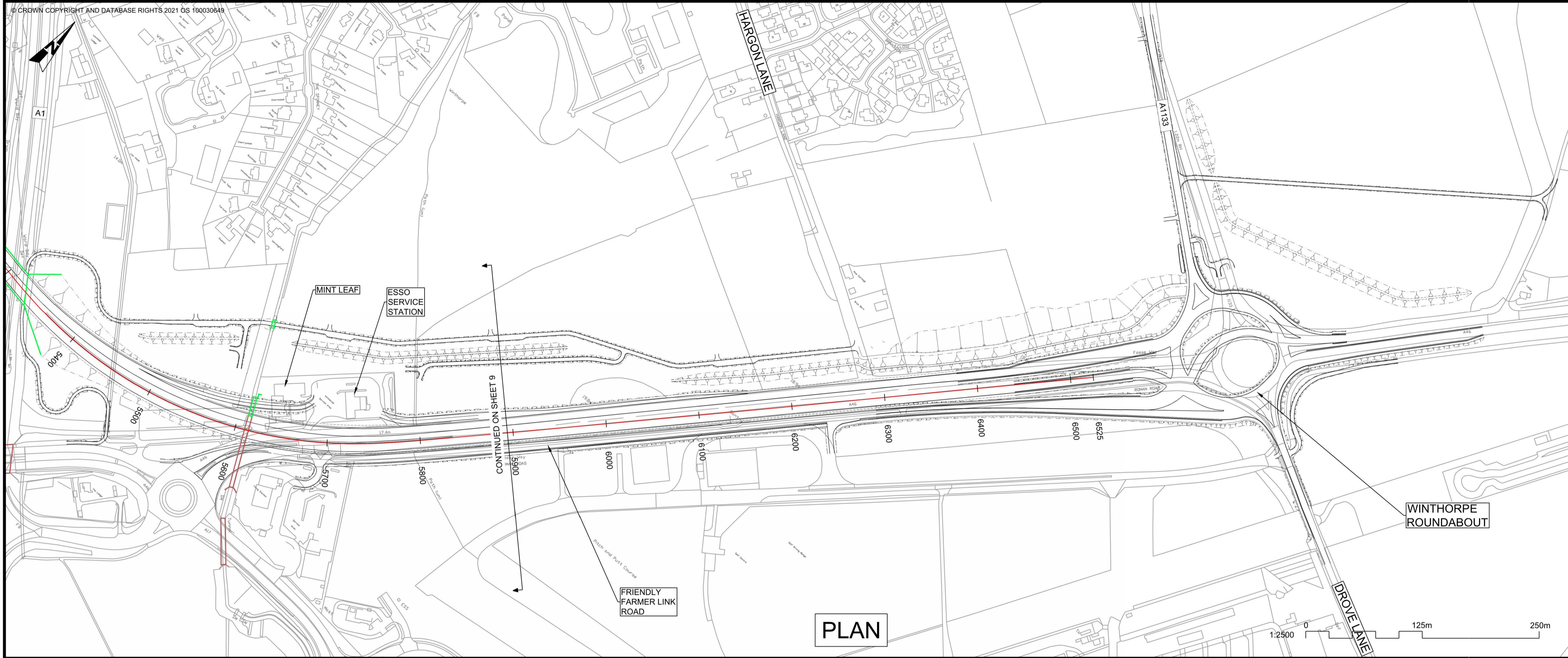
CHAINAGE	EXISTING LEVELS	PROPOSED LEVELS	LEVEL DIFFERENCE
4400.000	12.211	12.593	0.382
4450.000	11.592	12.036	0.444
4500.000	11.378	11.757	0.379
4550.000	11.395	11.755	0.360
4600.000	11.609	12.032	0.423
4650.000	11.787	12.568	0.799
4700.000	11.959	13.349	1.390
4750.000	11.208	14.124	2.916
4800.000	11.000	14.899	3.899
4850.000	10.481	15.674	5.193
4900.000	9.965	16.449	6.484
4950.000	10.218	17.224	7.006
5000.000	10.887	17.999	7.113
5050.000	11.072	18.775	7.702
5100.000	10.901	19.550	8.649
5150.000	10.683	20.319	9.636
5200.000	10.389	20.880	10.490
5250.000	10.159	21.128	10.969
5300.000	10.973	21.063	10.090
5350.000	10.067	20.686	10.619
5400.000	12.504	20.034	7.529
5450.000	16.206	19.340	3.133
5500.000	16.893	18.646	1.753
5550.000	15.746	17.952	2.206
5600.000	15.622	17.258	1.636
5650.000	16.285	16.823	0.537
5700.000	16.902	17.169	0.267
5750.000	17.321	17.611	0.290
5800.000	17.955	18.054	0.099
5850.000	18.497	18.497	0.000
5900.000	18.836	18.836	0.000

CHAINAGE	EXISTING LEVELS	PROPOSED LEVELS	LEVEL DIFFERENCE
5950.000	19.000	19.000	0.000
6000.000	19.000	19.000	0.000
6050.000	19.000	19.000	0.000
6100.000	19.000	19.000	0.000
6150.000	19.000	19.000	0.000
6200.000	19.000	19.000	0.000
6250.000	19.000	19.000	0.000
6300.000	19.000	19.000	0.000
6350.000	19.000	19.000	0.000
6400.000	19.000	19.000	0.000
6450.000	19.000	19.000	0.000
6500.000	19.000	19.000	0.000
6550.000	19.000	19.000	0.000
6600.000	19.000	19.000	0.000
6650.000	19.000	19.000	0.000
6700.000	19.000	19.000	0.000
6750.000	19.000	19.000	0.000
6800.000	19.000	19.000	0.000
6850.000	19.000	19.000	0.000
6900.000	19.000	19.000	0.000
6950.000	19.000	19.000	0.000
7000.000	19.000	19.000	0.000
7050.000	19.000	19.000	0.000
7100.000	19.000	19.000	0.000
7150.000	19.000	19.000	0.000
7200.000	19.000	19.000	0.000
7250.000	19.000	19.000	0.000
7300.000	19.000	19.000	0.000
7350.000	19.000	19.000	0.000
7400.000	19.000	19.000	0.000
7450.000	19.000	19.000	0.000
7500.000	19.000	19.000	0.000
7550.000	19.000	19.000	0.000
7600.000	19.000	19.000	0.000
7650.000	19.000	19.000	0.000
7700.000	19.000	19.000	0.000
7750.000	19.000	19.000	0.000
7800.000	19.000	19.000	0.000
7850.000	19.000	19.000	0.000
7900.000	19.000	19.000	0.000
7950.000	19.000	19.000	0.000
8000.000	19.000	19.000	0.000

CHAINAGE	EXISTING LEVELS	PROPOSED LEVELS	LEVEL DIFFERENCE
8050.000	19.000	19.000	0.000
8100.000	19.000	19.000	0.000
8150.000	19.000	19.000	0.000
8200.000	19.000	19.000	0.000
8250.000	19.000	19.000	0.000
8300.000	19.000	19.000	0.000
8350.000	19.000	19.000	0.000
8400.000	19.000	19.000	0.000
8450.000	19.000	19.000	0.000
8500.000	19.000	19.000	0.000
8550.000	19.000	19.000	0.000
8600.000	19.000	19.000	0.000
8650.000	19.000	19.000	0.000
8700.000	19.000	19.000	0.000
8750.000	19.000	19.000	0.000
8800.000	19.000	19.000	0.000
8850.000	19.000	19.000	0.000
8900.000	19.000	19.000	0.000
8950.000	19.000	19.000	0.000
9000.000	19.000	19.000	0.000



CHAINAGE	EXISTING LEVELS	PROPOSED LEVELS	LEVEL DIFFERENCE
9050.000	19.000	19.000	0.000
9100.000	19.000	19.000	0.000
9150.000	19.000	19.000	0.000
9200.000	19.000	19.000	0.000
9250.000	19.000	19.000	0.000
9300.000	19.000	19.000	0.000
9350.000	19.000	19.000	0.000
9400.000	19.000	19.000	0.000
9450.000	19.000	19.000	0.000
9500.000	19.000	19.000	0.000
9550.000	19.000	19.000	0.000
9600.000	19.000	19.000	0.000
9650.000	19.000	19.000	0.000
9700.000	19.000	19.000	0.000
9750.000	19.000	19.000	0.000
9800.000	19.000	19.000	0.000
9850.000	19.000	19.000	0.000
9900.000	19.000	19.000	0.000
9950.000	19.000	19.000	0.000
10000.000	19.000	19.000	0.000



PLAN

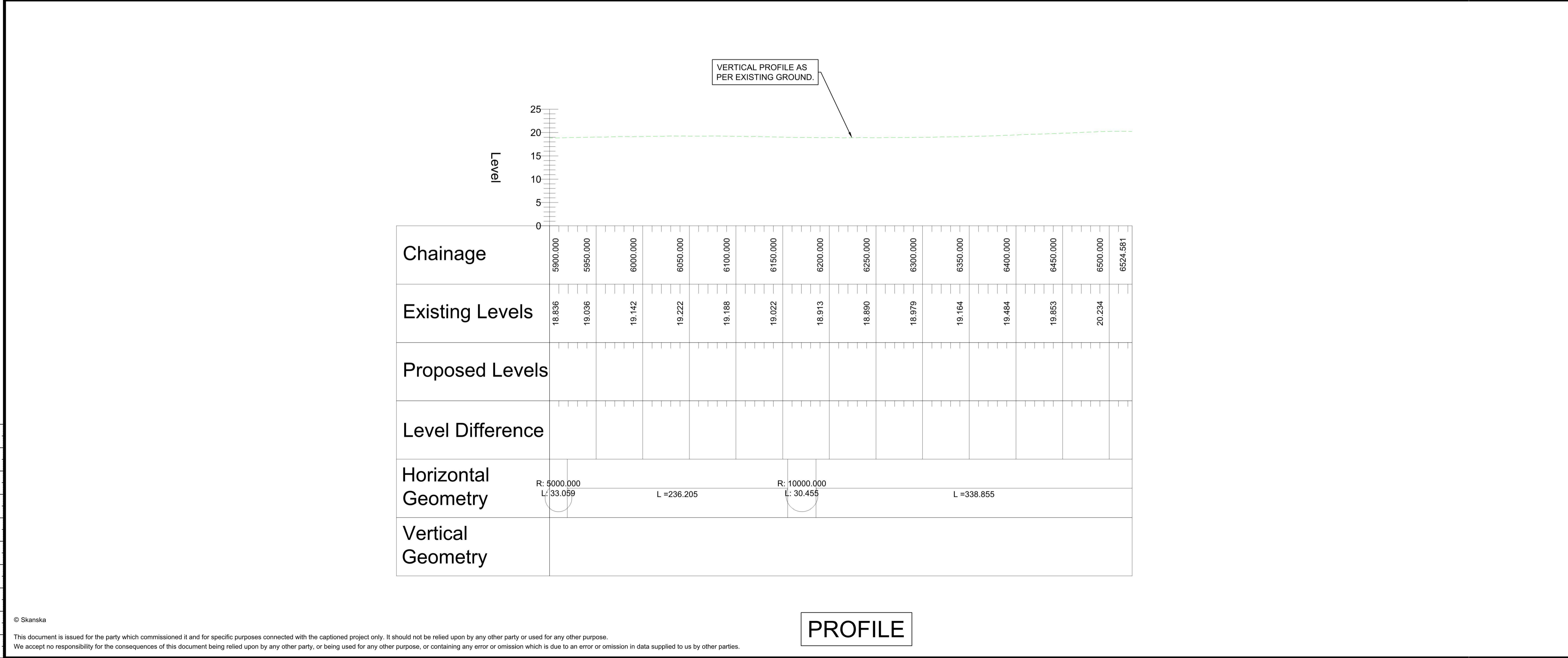
- NOTES**
1. THE DESIGN SHOWN WILL BE SUBJECT TO DETAILED DESIGN DEVELOPMENT IN ACCORDANCE WITH THE PROVISIONS OF THE DEVELOPMENT CONSENT ORDER (TR010065/APP/3.1).
 2. THIS DRAWING SHOULD BE READ IN CONJUNCTION WITH THE WORK PLANS (TR010065/APP/2.3) AND SCHEDULE 1 (AUTHORISED DEVELOPMENT) OF THE DEVELOPMENT CONSENT ORDER (TR010065/APP/3.1).
 3. DO NOT SCALE FROM THIS DRAWING, USE ONLY PRINTED DIMENSIONS.
 4. ALL DIMENSIONS, CHAINAGES, LEVELS AND COORDINATES ARE IN METRES UNLESS DEFINED OTHERWISE.

PLAN VIEW KEY:

- EXISTING STRUCTURE
- NEW STRUCTURE
- NEW DESIGN
- NEW ALIGNMENT
- NEW DESIGN CHAINAGE
- NEW EMBANKMENT
- NEW CUTTING
- RIVER
- RAILWAY LINE

PROFILE VIEW KEY:

- EXISTING GROUND
- NEW ROAD LEVEL
- NEW STRUCTURE

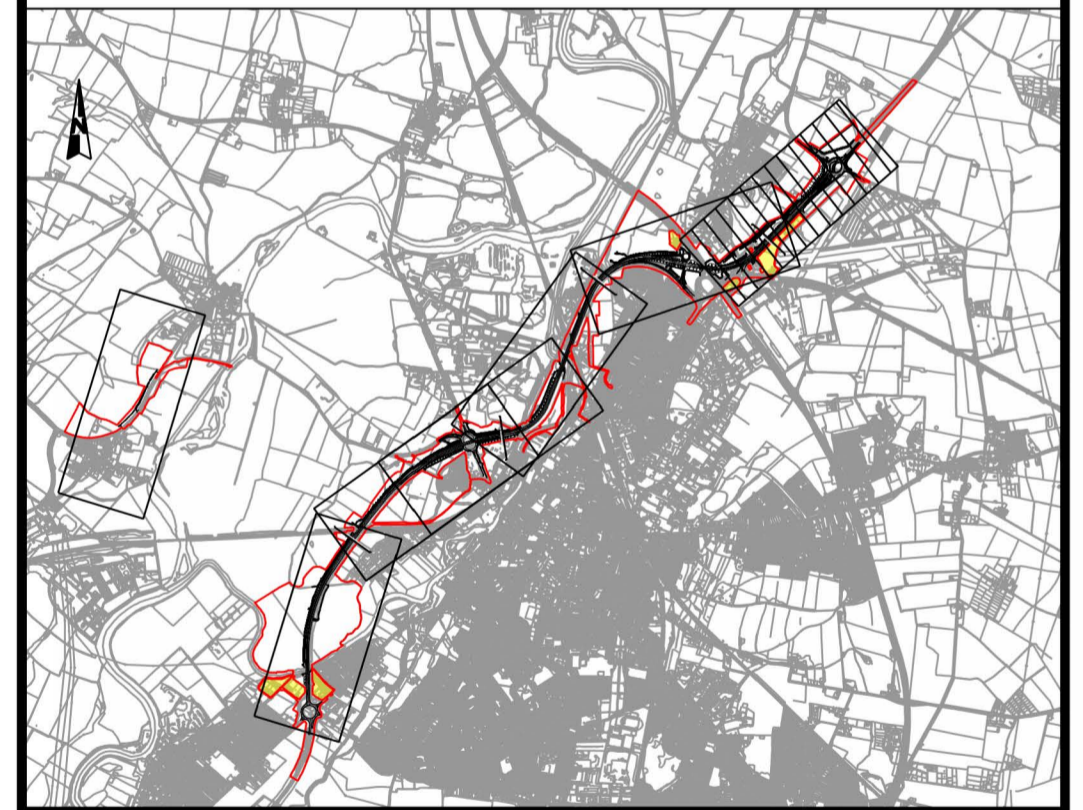


VERTICAL PROFILE AS PER EXISTING GROUND.

Chainage	Existing Levels	Proposed Levels	Level Difference
5900.000	18.836		
5950.000	19.036		
6000.000	19.142		
6050.000	19.222		
6100.000	19.188		
6150.000	19.022		
6200.000	18.913		
6250.000	18.890		
6300.000	18.979		
6350.000	19.164		
6400.000	19.484		
6450.000	19.853		
6500.000	20.234		
6524.581			

Horizontal Geometry	Vertical Geometry
R: 5000.000 L: 33.059	
L = 236.205	
R: 10000.000 L: 30.455	
L = 338.855	

PROFILE



REV.	DATE	AMENDMENT DETAILS	ORIG	CHK'D	APP'D
C02	11/03/24	Revised for DCO Submission	JK	SC	HF
CLIENT					
national highways					
PURPOSE OF ISSUE					
DCO APPLICATION					
DEVELOPMENT CONSENT ORDER NUMBER					
TR010065					
PROJECT TITLE					
A46 NEWARK BYPASS					
DRAWING TITLE					
ENGINEERING PLANS AND SECTIONS REGULATION 5(2)(o), 5(2)(P) and 6(2) PLAN AND PROFILES - SHEET 10 OF 37 MAINLINE SOUTHBOUND					
ORIGINAL SIZE		SCALE			
A1		1:2500			
DRAWING NUMBER		ORIGINATOR		VOLUME	
HE551478		SKAG		HGN	
PROJECT REF NO.		REVISION			
HE551478		C02			
LOCATION		TYPE		ROLE	
CONWI_CONW		DR		CH	
		26210			